

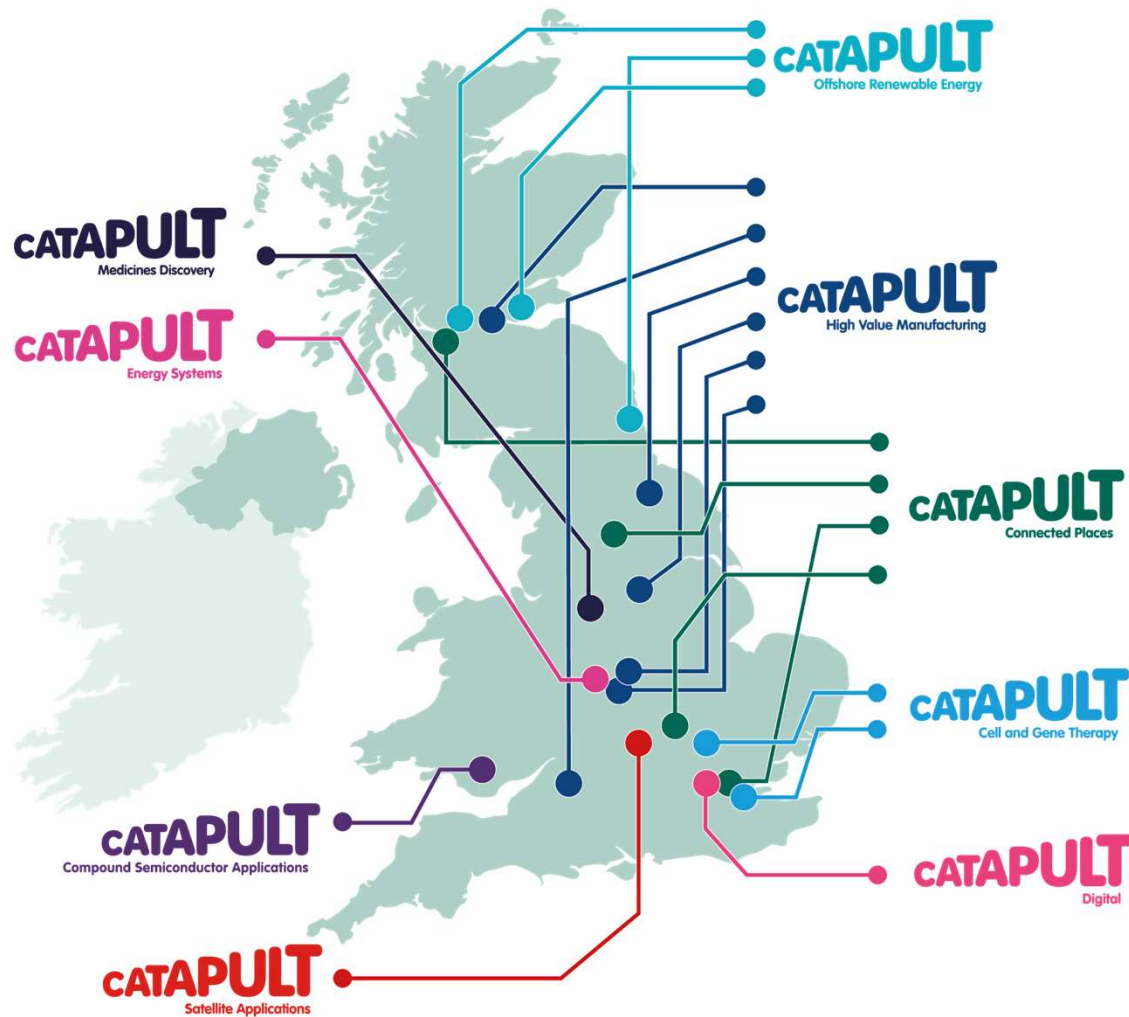
AIRPORT MULTI-MODAL CONNECTIVITY

An abstract 3D graphic on the right side of the slide. It features a dark teal background with glowing teal and orange geometric shapes. A prominent shape is a rounded rectangular frame with a glowing teal border and two circular end caps. Below it, there are several rectangular blocks, some glowing orange and others teal, arranged in a way that suggests a complex, interconnected structure, possibly representing a multi-modal transport system.

Andrew Chadwick
Aviation Technology Innovation Lead
Connected Places Catapult

Manchester Airport Transport Forum
19 October 2022

CATAPULTS – A FORCE FOR INNOVATION AND GROWTH



CATAPULT
Connected Places

9

Innovation
Centres
across the UK

A network of world leading centres designed to transform and accelerate the UK's capability for innovation and future economic growth.

Connected Places Catapult

CONNECTED PLACES CATAPULT IS THE UK'S INNOVATION ACCELERATOR FOR CITIES, TRANSPORT AND PLACE.

A neutral, independent, trusted, expert convenor

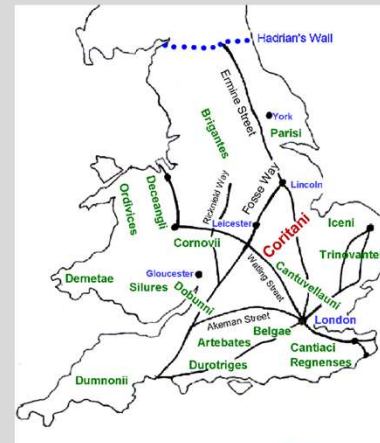
We operate at the intersection between public and private sectors, between local and central government, and academia addressing challenges of today and tomorrow.

Our focus is on connecting businesses in order to generate new opportunities and accelerate the creation of innovative products and services which will deliver solutions.



CONNECTED BUT NOT INTEGRATED

- UK transport network based upon original Roman road network and Victorian infrastructure
- Connections primarily between major conurbations
- Poor connectivity rurally and between regions
- Static transport system – lack of flexibility, lack of resilience, South East centric
- Aviation concentrated on international rather than regional connectivity, exception being Public Service Obligation (PSO) Flights



A NEW PARADIGM – ELECTRIC AVIATION

- Advanced Air Mobility and the introduction of electric regional aircraft can create a more flexible, sustainable, economically viable, resilient and integrated transport network
- Introducing an “Integrated Traffic Management System” approach to transport connectivity for all modes
- More options: the journey, not the mode
- Recognises aviation as part of our Critical National Infrastructure, which should be protected and exploited



Image courtesy: Vertical Aerospace

INFRASTRUCTURE

Physical

- Major and medium-sized airports
- GA and regional airfield network
- Vertiports
- Droneports
- “Airfields as energy hubs” concept
- Airport connectivity
- Connectivity to rail, road and transport network
- Connected to the local community
- Environmentally sustainable

Digital

- Communications/4G/5G/5G+
- Digital Air Traffic Management system for all air users
- Real-time data sharing
- Digitally connected end-to-end journeys



Image courtesy: Skyports

Skyports European
Vertiport Testing Facility,
Cergy Pontoise, Paris

TECHNOLOGY

- Mobility as a Service (MaaS)
- Airspace and “urban airspace” design
- Integrated sustainable logistics
- Zero emission aircraft
- Adoption of autonomous aircraft technology
- Digital technologies, IOT, etc.
- High frequency operations
- Scalability
- Travel Apps
- Cyber-Physical Infrastructure (CPI) - networked virtual and physical tools

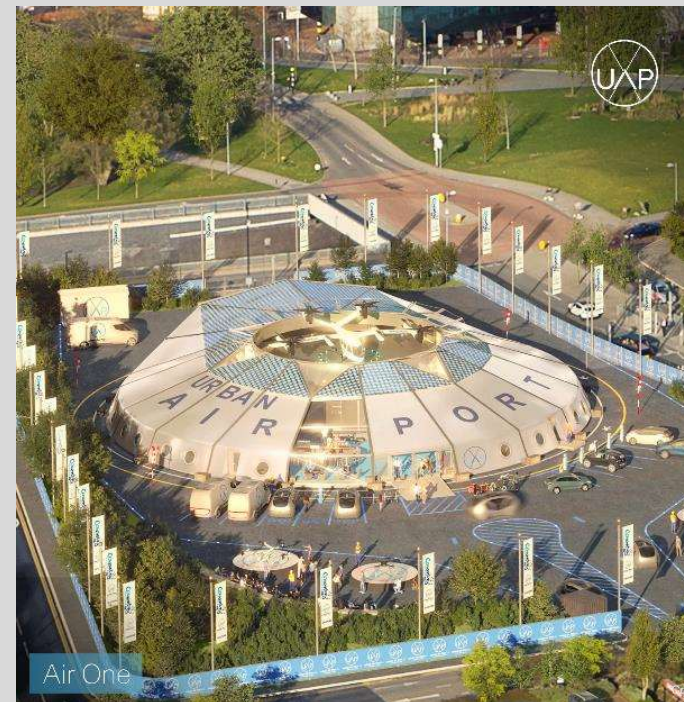


Image courtesy: Urban Air Port

OPPORTUNITIES AND BENEFITS

- **Social**

- Connectivity – flexible, point to point, rural, urban
- Union connectivity
- More routes – taking loads off our roads
- Community services
- Off-grid energy solutions

- **Economic**

- Business growth
- Reduced travel times
- Reduced congestion

- **Economic (cont'd)**

- New transport hubs
- Multi-modal transport connectivity
- Inter-city air travel
- New logistics networks

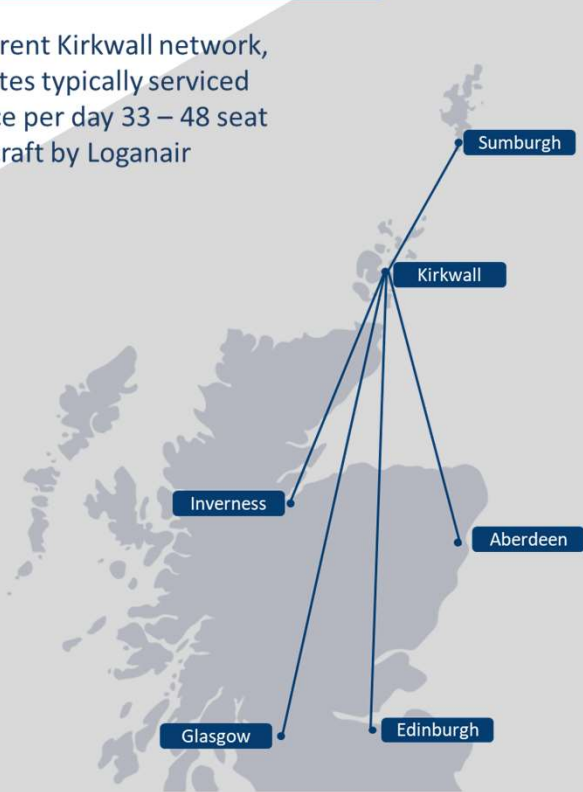
- **Environmental**

- Sustainable solutions
- Electric and hydrogen powered zero emission aircraft
- New and sustainable aviation fuels
- Energy hubs
- Reduced carbon footprint
- Significant noise and emission reduction

REGIONAL CONNECTIVITY - EXAMPLE

A Highlands & Islands zero emission regional aviation network system

Current Kirkwall network, routes typically serviced once per day 33 – 48 seat aircraft by Loganair



Potential network including logical 1 stop connections. Services operated at high frequency (>6 flights each way per day) with 19 seat aircraft and 15 to 30 min connection times.

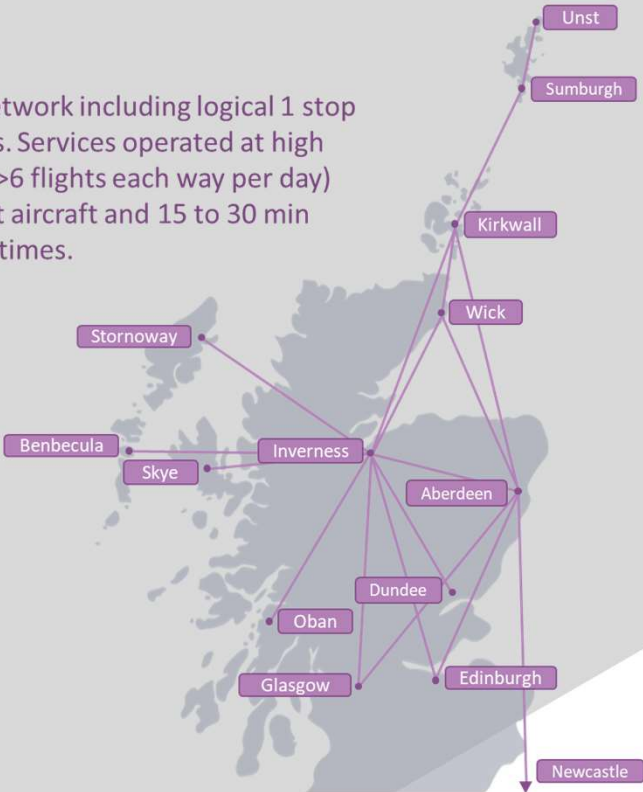
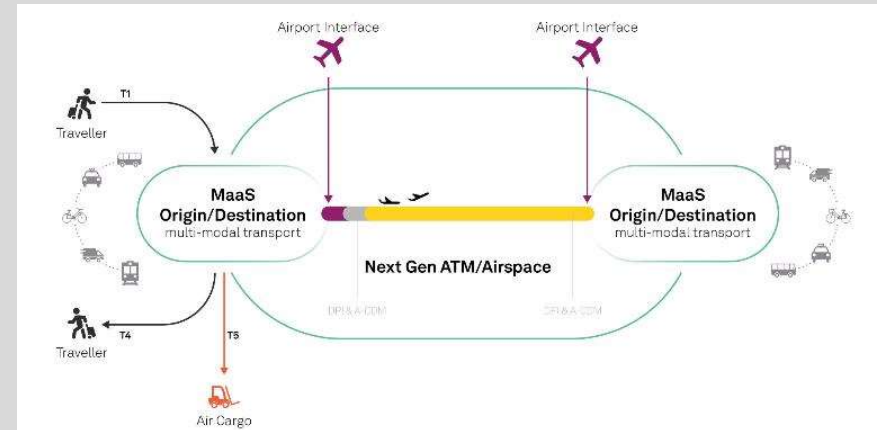


Image courtesy: Highlands and Islands Airports and Loganair

OPPORTUNITIES FOR AIRPORTS

- Integrated eAircraft operations as an integral part of a multi-modal urban and inter-regional transportation driving an integrated approach to sustainable urban mobility
- Improved connectivity between places previously not served or understood by today's commercial aviation
- Infrastructure adaptation, evolution and integration into transport, energy and digital networks for efficient and seamless door-to-door mobility acting as a catalyst for multi-modal transport networks
- Develop an integrated transport model, centred around airport journeys and transportation around the airport environment, including the utilisation of new air mobility systems
- Digitally connected end-to-end journeys
- Sustainability-driven business models: people, planet, profit
- Airports as energy hubs

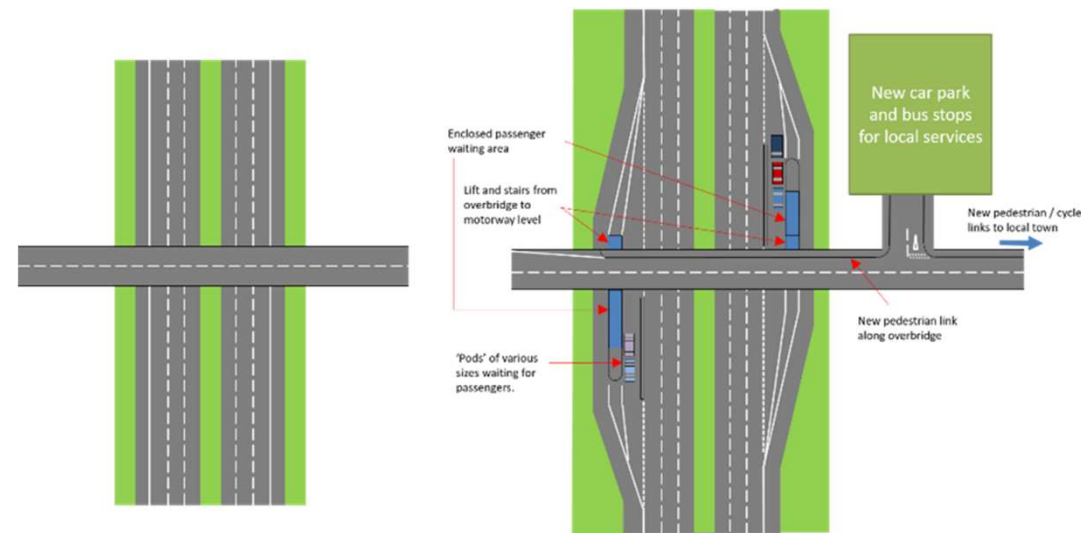


- Introduces the concept of “Airports as Places”
- More integrated living – connecting business, residential, and recreational
- Improved community engagement and public value creation
- Greater collaboration – locally, regionally and nationally
- Green mobility corridors between cities and airports, including opportunities for decarbonised transport systems and modal shift, improve journey times, and passenger experience

CASE STUDY: MOTORWAY MOBILITY STUDY

EXPLORING AUTOMATED PUBLIC TRANSPORT SERVICES ON MOTORWAYS

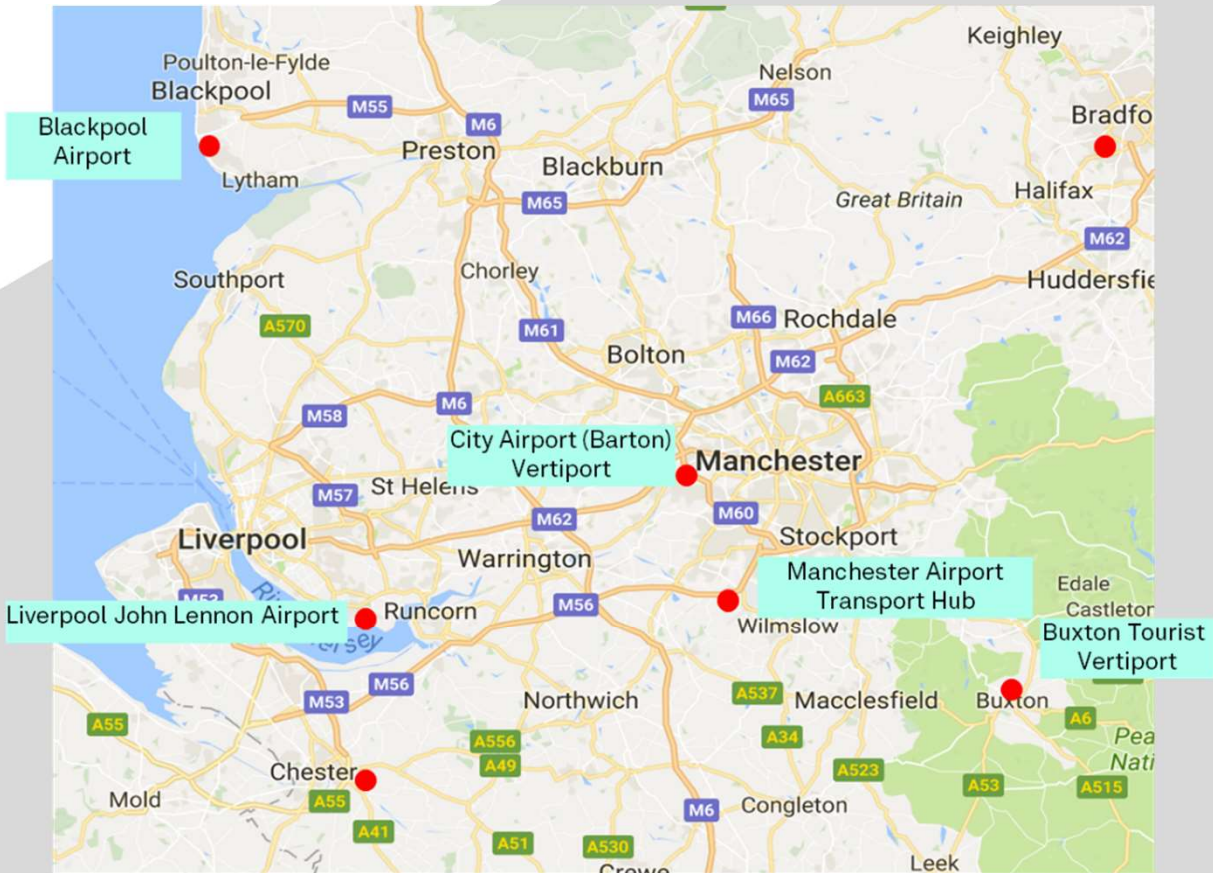
- Connected Places Catapult previously explored the use of existing motorway infrastructure together with autonomous vehicles and new transport hubs near to motorways, to provide new or more frequent services between a wide variety of locations across the country.
- The study explored how frequent and convenient services of this type throughout the day and night could enable users to switch from the private car to public transport.
- Airport workers travel to work test case.
- ‘Stations’ could be created on or near motorways



Before

After: Station constructed to provide interchange between vehicles and local transport modes

IMPROVED CONNECTION TIMES BY ELECTRIC AIR TAXI*



*Based on current Vertical Aerospace VX-4 performance specification



Image courtesy: Vertical Aerospace

Manchester Airport Transport Hub by
Air Taxi to:

Blackpool Airport	20 minutes
Liverpool John Lennon Airport	12 minutes
City Airport (Barton)	5 minutes
Bradford City Centre Vertiport	22 minutes
Buxton Tourist Vertiport	9 minutes
Chester Vertiport	12 minutes

And all points in between!

FINAL THOUGHT – FOR TODAY

“One mile of surface transportation takes you one mile, whereas one mile of aviation land can take you anywhere”

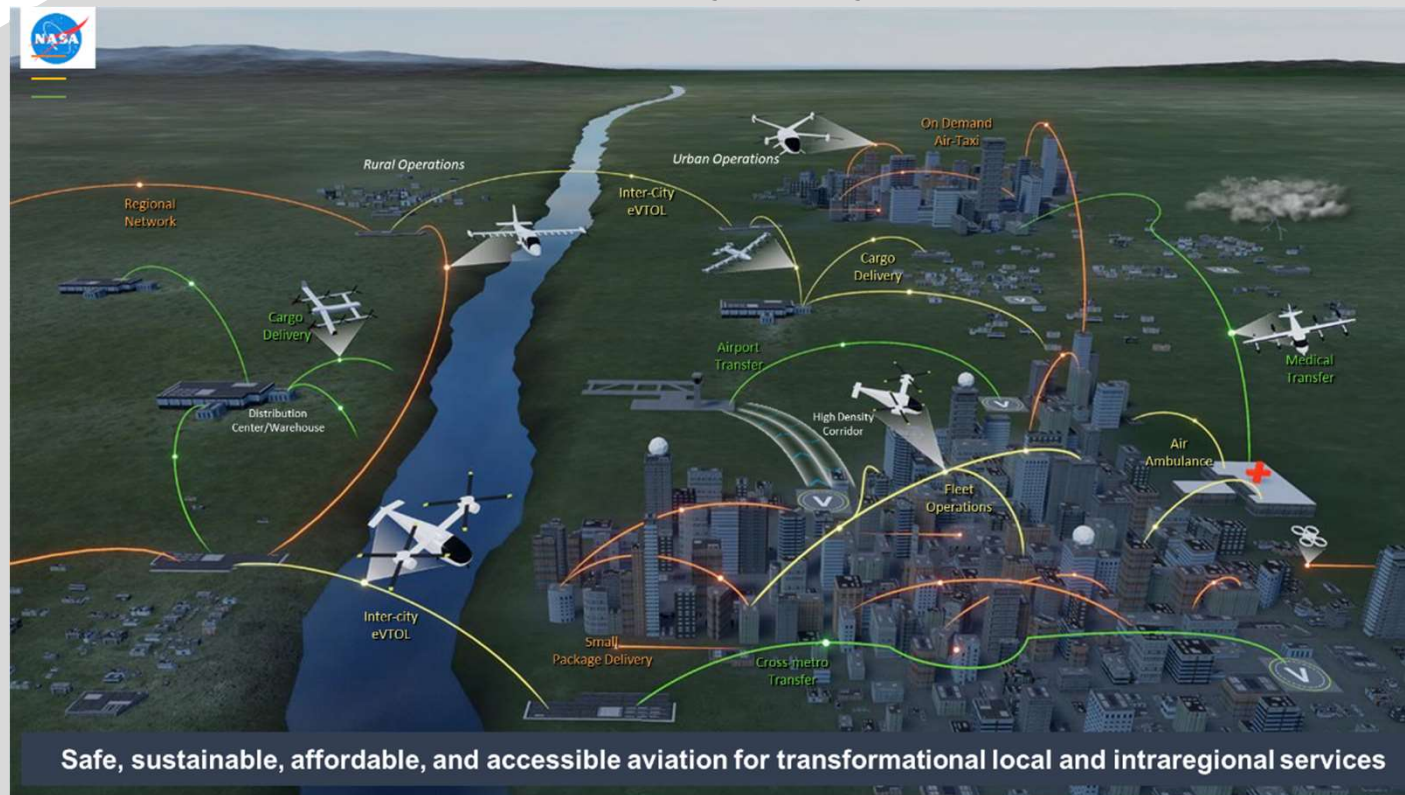


Image courtesy: NASA

THANK YOU



Andrew.Chadwick@cp.catapult.org.uk

www.cp.catapult.org.uk