

EMA Community Fund



EAST MIDLANDS AIRPORT
**COMMUNITY
FUND**

Annual Report

1 APRIL 2025 TO 31 MARCH 2026

WHAT IS THE COMMUNITY FUND?

The EMA Community Fund was established in April 2002 and by 31 March 2026 it has awarded **£2,860,331** to **2,026** projects, to bring lasting benefit to the communities around the airport.

The Community Fund awards grants to support eligible projects that have a lasting community, social, educational or environmental benefit and can award a maximum of **£2,000** per application looking for tangible items of lasting value.

More information about our EMA Community Fund is available on our website [here](#) which includes deadline dates for applications, links to our online application portal and the [Community Fund brochure](#) that provides more details about eligibility criteria. It is advisable to read the Community Fund Brochure before completing an application.



eastmidlandsairport.com



The Community Fund is open all year round to community groups within an 'area of benefit' defined below. It is easy to see whether your group is within this area by looking at the list of eligible postcodes to the right of the image.

EAST MIDLANDS AIRPORT COMMUNITY FUND AREA OF BENEFIT

EMA COMMUNITY FUND ELIGIBLE AREA
 Community Fund Area boundary.
 All listed postcodes are eligible.

For more information visit www.eastmidlandsairport.com/community
 To contact us email community@eastmidlandsairport.com

LIST OF ELIGIBLE POSTCODES

DE1 1	LE12 7	LE67 4
LE11 2	LE12 8	LE67 5
LE11 3	LE12 9	LE67 8
LE11 4	LE14 3	LE67 9
LE11 5	LE65 1	LE7 1
LE12 5	LE65 2	LE7 3
LE12 6	LE67 3	LE7 4

DE1 1	DE22 3	DE3 9
DE1 2	DE23 1	DE65 5
DE11 0	DE23 2	DE65 6
DE11 7	DE23 3	DE7 4
DE11 8	DE23 4	DE7 5
DE11 9	DE23 6	DE7 8
DE12 6	DE23 8	DE7 9
DE13 0	DE24 0	DE72 2
DE13 9	DE24 1	DE72 3
DE14 1	DE24 3	DE73 5
DE14 2	DE24 5	DE73 6
DE14 3	DE24 8	DE73 7
DE15 0	DE24 9	DE73 8
DE15 9	DE3 0	DE74 2

NG1 2	NG12 4	NG8 2
NG1 5	NG12 5	NG8 3
NG1 6	NG2 1	NG8 4
NG1 7	NG2 2	NG8 6
NG10 1	NG2 3	NG9 1
NG10 2	NG2 5	NG9 2
NG10 3	NG2 6	NG9 3
NG10 4	NG2 7	NG9 4
NG10 5	NG7 1	NG9 5
NG11 0	NG7 2	NG9 6
NG11 6	NG7 3	NG9 7
NG11 7	NG7 4	NG9 8
NG11 8	NG7 5	
NG11 9	NG8 1	

FIND OUT MORE ABOUT
HOW WE SUPPORT THE
LOCAL COMMUNITY

Eligible projects need to meet at least one of our Fund Objectives:



To bring the community closer together through facilities for sport, recreation and other leisure time activities.



Supporting young people to prepare for the world of work and make work an inspiring choice.



Offer environmental improvement and/or heritage conservation.



Improve awareness of environmental issues through environmental education.



Encourage and/or protect wildlife.

WHO ARE THE COMMITTEE?

The Community Fund is managed independently by a Community Fund Committee that meets four times a year. This year meetings were held on 6 May, 4 August, 3 November 2025 and 2 February 2026.

Applications are considered by our independent committee. There are five members of the committee including three councillors, one each from the three local counties represented in the 'Area of Benefit', an airport on site business representative and a representative from East Midlands Airport.

During the financial year from April 2025 to March 2026 the Community Fund Committee was chaired by **Councillor Steve Taylor** (representing the Derbyshire area). Other committee members included **Councillor Angus Sowter** (representing the Leicestershire area), **Councillor Andy Brown** (representing the Nottinghamshire area), **Ms Gemma Finney** (representing an airline) and **Ms Colleen Hempson** (representing the airport).



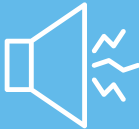
**Councillor
Steve Taylor**

WHERE DOES THE MONEY COME FROM?

This year the Fund received an annual donation of **£57,000** from the airport. This donation is now index linked and so will increase in line with inflation each year. In addition to the airport donation the fund also receives all noise surcharges and noisy aircraft penalties imposed when aircraft exceed our noise limits.

In the financial year from **April 2025 to March 2026** there were a total of **£24,097** noise fines and surcharges. These were made up of one QC4 surcharge of **£3,104** and **20 noise fines** totalling **£20,993**. There was also an additional contribution of **£1,337** paid into the fund from car salvage income donations.

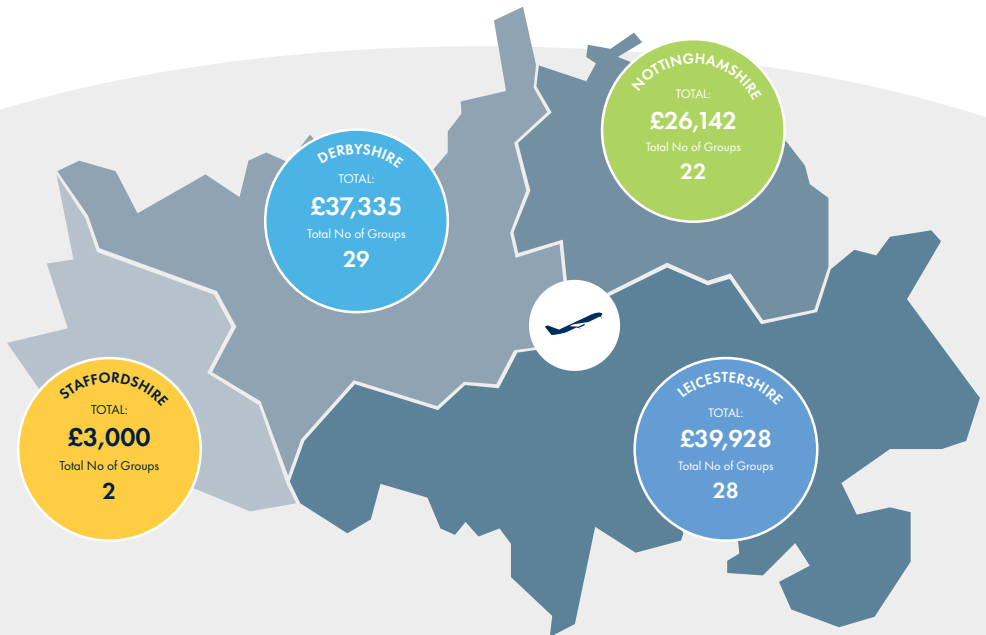
Some unspent funds were also carried forward from the previous year, allowing additional awards to be made in this financial year.





HOW HAS THE MONEY BEEN DISTRIBUTED?

In the financial year from **April 2025 to March 2026** the EMA Community Fund has helped deliver **81 community projects** through grants totalling **£106,405**.



EXAMPLES OF PROJECTS BENEFITTING FROM EMA COMMUNITY FUND GRANTS



One Kegworth received **£2,000** towards materials to build their 'Santa Sleigh' along with an event shelter and costumes.



Kegworth Town Cricket Club received **£2,000** towards replacement cricket nets.





West Area Project received **£1,800** towards a foldable poolside wheelchair.



In FY25 **Castle Donington Town Bowls Club** received **£2,000** towards a new irrigation system for their bowling green, and this project was completed in FY26. Pictured here on the day the new irrigation system was installed are Cllrs Steve Taylor and Angus Sowter with members of the bowls club.



In FY25 **Belton Parish Council** received **£2,000** towards the restoration of a red telephone box and its conversion into a library, and this project was completed in FY26. Pictured are Cllr Angus Sowter from the EMA Community Fund Committee with local Belton author Jamie Mollard.





Hemington and Lockington (HemLock) Sports Pavillion opened this summer. The facility has previously benefitted from an EMA Low Carbon energy grant of **£10,000** towards solar panels, and in FY26 received £2,000 towards acoustic panels. Above is an image of children from Hemington Primary School who held their sports day at the pavilion as part of the opening event programmes.



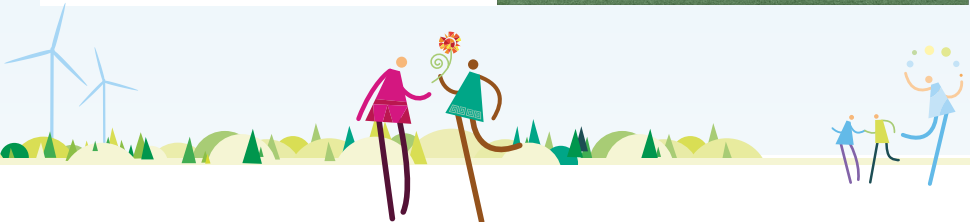
Youth Landscapers Collective CIC recently won an EMA Community Fund grant of **£1000** towards a range of equipment including an amp, microphones, keyboard, headphones, printer and a projector. These audiovisual tools and equipment will allow them to deliver their songwriting project to a high standard, as well as developing a reusable resource for the group's future. Youth Landscapers Collective is a youth-led arts and heritage group supporting young people's personal, practical and creative development through innovative, place-based programmes that support the local community. Their members (young people aged 13-25) design and deliver projects that are shaped entirely by their own interests.





Marlborough Rovers Football Club, based in Moira near Swadlincote were recently awarded **£1000** from the EMA Community Fund towards a printed gazebo, flags and a table to support their ongoing fundraising efforts. They received lots of positive comments on the design of their new gazebo at a fundraising event at a wet and windy Christmas market. Pictured are the Club's Under 14s parent volunteers.

Cllr Angus Sowter recently attended the opening event of **West Bridgford Hockey Club** for the unveiling of their new goals, thanks to a grant of **£1000** from the East Midlands Airport Community Fund. Aisling Hooper from the hockey club said 'We are absolutely delighted with the pitch and hockey goals and we are grateful to have the support of the EMA Community Fund'.





Devil's Elbow Rowing Club were recently awarded **£1,000** towards a training boat. Jo Coleman from the club said 'a very special thank you to the East Midlands Airport Community Fund for supporting our campaign to buy new boats, backing local sport on the River Trent. We have managed to make our first boat purchase of 2026 and pictured here is the inaugural outing of Olivia, a 4+ boat aimed at lighter rowers.'

In FY25 **Breaston Repair Café** received **£1000** from the EMA Community Fund towards items to help them run the repair café and this project was completed in FY26. Pictured here are Cllrs Angus Sowter and Andy Brown from the EMA Community Fund Committee with Sally Edgar and Julie Forrest from the Breaston Repair Café. Sally runs the sewing team, and Julie heads up the recycle area.



In FY25 **Willington Primary School** won **£10,000** from the East Midlands Airport Eco Garden fund, and they completed their garden in FY26. Pictured at the opening event in March are past members of the school council who created the winning design and current members of the school council who have worked hard to create the garden. They are pictured with teacher, Mrs Nicky Robinson and headteacher, Mrs Spencer Lovesey, members of the landscaping team that constructed the pond as well as EMA Community Fund Committee Chair, Cllr Steve Taylor, and Colleen Hempson, EMA Community Engagement Manager.





In FY25 Friends of **Long Eaton Library Group** won an EMA Community Fund grant of **£2000** towards tables, chairs and a sofa, to help create a welcoming and relaxed new community space for the various mentoring services, advisory groups and community groups that make use of the library space. These groups include a knit and natter group, a home-schooling mum's group, 50+ forum, DAAS (Derbyshire Alcohol Advice Service), job coaches as well as tutors working with excluded pupils.



In FY25 **Ockbrook and Borrowwash Tennis Club** (OBTC) received **£5,000** from the East Midlands Airport 'Low Carbon Energy' Community Fund towards portable LED lighting, and this project was completed in FY26. Pictured here at their open day and ribbon cutting event are Cllr Angus Sowter from the EMA Community Fund committee with Matt Cassar, Chair of OBTC and Ros Pioli, Fundraising Lead for OBTC.



WHO HAS BENEFITTED FROM A GRANT FROM THE EMA COMMUNITY FUND?

Below is a summary of the grants made in the financial year from **April 2025 to March 2026** by County, followed by a full list of grants for each County

DERBYSHIRE - AWARDED £37,335

ACROSS 29 GROUPS | TOTAL NUMBER OF BENEFICIARIES: 145,765

GROUP	POSTCODE	AWARDED	BENEFICIARIES	DESCRIPTION OF PROJECT
Weston on Trent Village Hall	DE72 2BL	£2,000	80	Tarmac materials for hard standing
St John Ambulance	DE1 2RE	£1,000	1,000	Defibrillator
We Say Play	DE65 5GB	£700	500	Pickleball paddles, nets and balls
Countryside Connect CIC	DE65 5GB	£1,989	1,500	Inverter generator, pressure washer, horse shower
Friends of Bennerley Viaduct	DE7 8DY	£2,000	100,000	Decking for bridge
Devil's Elbow Rowing Club	NG10 2FX	£1,000	70	Towards training boat
Newhall United FC	DE11 0TG	£500	120	Bowdry water remover kit
Firs Estate Allotments Association	DE22 3PU	£1,000	300	Timber raised beds and sub-base, paving stones, gravel,
All Being Well	DE723EP	£610	1,500	Tables, printer/scanner
Hemington Recreation Ground Charity	DE74 2RF	£2,000	20,000	Acoustic panels
Aston on Trent Local History Group	DE72 2AF	£1,650	2,000	Computer equipment
Staunton Harold Sailability Trust	DE73 8DL	£2,000	200	Towards a hoist
Hilton Amateur Theatrical Society	DE65 5GH	£360	450	Fabric for backdrop
Littleover Bowls Club	DE23 6ES	£1,244	3,000	Hand dryers and alarm for disabled toilet
Marlborough Rovers Football Club	DE12 6BP	£1,000	250	Printed gazebo, flags and bases, table

GROUP	POSTCODE	AWARDED	BENEFICIARIES	DESCRIPTION OF PROJECT
Whistlewood Common Limited	DE73 8DH	£1,000	750	Defibrillator and cabinet
Willington Crown Green Bowling Club	DE65 6BX	£1,000	300	Inner boards to gutters
15th Long Eaton Sea Scout Group	NG10 3JU	£1,000	150	Kitchen cabinets, drawers
1538 Community Interest Company	DE7 8FD	£1,000	35	Safe (Insurance approved) - De Raat DRS Prisma Grade 3
Repton Memory Singers	DE65 6GR	£1,000	5,040	Musical instruments, PA system, printer, folders
Friends of Aston Brickyard Local Nature Reserve	DE72 2AE	£904	4,000	Magnifying boxes, concrete, info signs
2nd Ilkeston Scout Group	DE7 5GF	£1,110	60	Event shelters and LED lanterns
IWD Derby	DE22 3LA	£1,000	200	Card readers, folding tables, table cloths, banners, clothes rails, PA system, storage boxes
Petersham Hall Community Association	NG10 4DZ	£1,884	200	Tables
MVH Triathlon Club	DE65 5FZ	£1,900	1,000	Compost toilet and power bank
Long Eaton Town Bowling Club Ltd	NG10 2EP	£1,570	600	Materials for bowling green edges
1st Newhall Scout Group	DE11 0JY	£1,914	60	Camping gear including tents, portable power station, trolley on wheels, iPad, lanterns
Swarkestone Cricket Club	DE73 7GR	£1,000	400	Café tables and chairs
Canal & River Trust	DE73 7GN	£2,000	2,000	Chainsaw gloves, safety boots, helmets, saws



LEICESTERSHIRE - AWARDED £39,928

ACROSS 28 GROUPS | TOTAL NUMBER OF BENEFICIARIES: 37,300

GROUP	POSTCODE	AWARDED	BENEFICIARIES	DESCRIPTION OF PROJECT
One Kegworth	DE24 2	£2,000	1,000	Santa sleigh materials, event shelter, costumes
Rainbows Hospice for Children and Young People	LE11 2HS	£2,000	150	Towards a wheelchair accessible vehicle
Belton Gardening Club	LE12 9UL	£892	50	Projector and pull up stand
Friends of Grace Dieu Priory	LE67 8LR	£900	1,000	Gazebos, folding tables and chairs, display boards, pop up toilet
Incredible Edible Sileby	LE12 7TT	£400	200	Gardening tools
Upstarts Gymnastics	LE12 5LZ	£700	300	Tumbl TrakT-trainer, pit foam socks
Bondgate Community Garden	DE74 2NS	£1,000	4,000	Gravel path for Community Garden
Loughborough Rugby Football Club	LE11 5FJ	£2,000	2,000	Female changing rooms
The David Clarke Railway Trust	LE11 1RW	£925	20,000	Stackable chairs
Youth Landscapers Collective CIC	DE12 6DJ	£1,000	-	Amp, microphones, keyboard, headphones, printer, projector etc
New Lount Bowling Club	LE67 8JF	£1,000	500	Cylinder lawnmower and cartridge
Castle Donington Museum Trust	DE74 2AJ	£1,487	1,500	Computer equipment
Wild Minds Nature Connection CIC	DE12 6AT	£1,500	400	Forest school equipment
Just Wood Leicestershire CIC	LE11 1QA	£2,000	50	Electrical, security and safety items
City of Leicester Scout Districts Management Charitable Trust	LE67 9PS	£1,504	900	Archery equipment
Kegworth Bowls Club	DE74 2FH	£1,000	-	Sorrel Roller Cassette
Desford Brass Band Club	LE67 3FA	£2,000	800	Insulation ceiling tiles
1st Ashby Girl Guides	LE65 1DT	£1,516	25	Tents
Without Walls	LE67 9TQ	£900	400	Commercial freezer

GROUP	POSTCODE	AWARDED	BENEFICIARIES	DESCRIPTION OF PROJECT
St Andrew's Church	DE74 2EE	£1,981	300	Fridge, freezer, dishwasher, extractor and wall mounted kettle
1st Loughborough (Parish Church) Scout Group	LE11 1PL	£1,997	100	Mess tent, canteen tables, fire shelters
The Oaks Scout Campsite	LE12 9YA	£1,000	2,000	Picnic tables
Woodhouse Eaves Womens Institute	LE12 8SD	£1,489	200	Timber for raised beds, lawn mower, strimmer, barrow
Shepshed Dynamo Youth & Juniors FC	LE12 9DB	£1,294	200	Defibrillator and installation
Charles Booth Centre	LE67 8NR	£1,912	50	Tables and chairs
Kegworth Town Cricket Club	DE74 2FH	£2,000	125	Cricket net
Ashby Croquet Club	DE12 6BP	£1,811	150	Croquet hoops and balls
Act One	LE12 9AL	£1,720	900	Tools for stage building and mics

STAFFORDSHIRE - AWARDED **£3,000**

ACROSS **2** GROUPS | TOTAL NUMBER OF BENEFICIARIES: **200**

GROUP	POSTCODE	AWARDED	BENEFICIARIES	DESCRIPTION OF PROJECT
Burton Sea Cadets	DE15 9AE	£2,000	100	Freezer, fridge, cooker, washing machine whiteboard, tables, chairs
Burton Canoe Club	DE15 0TU	£1,000	100	Paddleboards



NOTTINGHAMSHIRE - AWARDED £26,142

ACROSS 22 GROUPS | TOTAL NUMBER OF BENEFICIARIES: 45,805

GROUP	POSTCODE	AWARDED	BENEFICIARIES	DESCRIPTION OF PROJECT
Keyworth Cricket Club	NG12 5GE	£500	600	Frog Box Kit for live streaming
West Bridgfords Explorer Scout Unit (Rushcliffe District Scouts)	NG2 7NF	£1,897	60	Professional level walkie talkie radios
Barton Village Hall Trust	NG11 0AA	£878	500	Picnic benches
Beeston and Toton Sycamore Cricket Club	NG9 6EH	£500	400	Mower
Friends of St Michael's Church Sutton Bonington	LE12 5PF	£2,000	1,000	Stackable chairs
Wilford Bowmen	NG8 2AD	£1,000	80	Straw archery bosses
Tollerton Allotment Association	NG12 4GD	£598	75	Shed and mower
Sharewear Clothing Scheme	NG12 4DG	£750	25,000	Shopping trolleys and laundry hampers
Bengal United Cricket Club	NG9 2QT	£500	22	Compactor
Jigsaw Youth Club	NG7 2FB	£1,089	40	Gardening equipment
Sutton Bonington Playscheme	LE12 5PE	£1,000	320	Craft and sports items
Dunkirk and Old Lenton Community Association	NG7 2JW	£1,000	1,000	Play equipment
West Bridgford Hockey Club	NG2 7FA	£1,000	1,850	Hockey goal set
Sandiacre Town Youth Football Club	NG10 5DE	£500	22	Kit, football training equipment
Friary Drop-In	NG2 7PR	£1,360	300	Desktop computers
West Area Project	NG7 1RQ	£1,800	20	Foldable pool wheelchair
Wilder International	LE12 5NP	£1,270	2,338	Interpretive board and tools for nature reserve
Willoughby on the Wolds Village Hall	LE12 6SX	£2,000	1,005	Solar Panels
Morsbags Stapleford Rag Bag & Bobtail	NG9 7AS	£2,000	1,000	Sewing machines and equipment
8th East Leake Rainbows	LE12 6PG	£1,500	23	Tent, camp kitchen, camping equipment
Clifton Village Cricket Club	NG11 8NS	£1,000	150	Sight screen
Kingsnton on Soar Parish Council	NG11 0LR	£2,000	10,000	Restoration of the Historic Village Pump



And finally... new signs point the way to an upgraded Airport Trail

To commemorate the airport's 60th year, the EMA Community Fund committee agreed to provide £60,000 to upgrade the Airport Trail. The money was ringfenced from historic QC4 surcharges received in the years directly following the pandemic. The funds supported renewed wayfinding and information boards as well as improvements to footpath surfaces and the reinstatement of a stretch of hedgerow.

The Airport Trail is ten kilometres long with picnic grounds to the north-east. It provides access to country walks for local communities and vantage points both for nature lovers and aviation enthusiasts.

A series of nine new information boards have been installed at key points around the trail, providing details about local history, wildlife in the area and other points of interest. Members of the Kegworth Heritage Centre, Castle Donington Museum and Diseworth Heritage Centre provided valuable information which was included on key information boards. Information boards for the five works of art on the trail have also had a refresh and one of the art installations, called Stepping Stones, has been relocated from the north to a new location south of the airport near the central ponds.

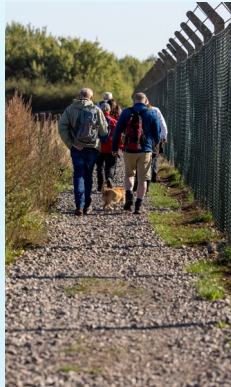
New gateway signs have also been installed at entry points to the trail. These were designed and created by students from Derby-based alternative education provider Engineered Learning, with precision metal cutting spelling out 'Airport Trail' alongside an image of a tree. Engineered Learning provides opportunities for vulnerable young people to learn engineering skills in order to increase their employability.

During the summer of 2025 airport partner BAM Construction and airport volunteers worked together to lay over half a kilometre of stone along a stretch of the footpath to the north, which was particularly muddy during the wet seasons.

Later that year, in November 2025, the airport's managing director Steve Griffiths joined thirty airport volunteers, braving the cold weather to plant 1,400 whips to create a new 400m-long hedge along the north-west section of the Airport Trail.



You can read the updated Airport Trail Guide [here](#) >





More information about our EMA Community Fund is available on our website [here](#) which includes deadline dates for applications, links to our online application portal and the [Community Fund brochure](#) that provides more details about eligibility criteria. It is advisable to read the Community Fund Brochure before completing an application.

You can also contact us at:

✉ community@eastmidlandsairport.com

eastmidlandsairport.com

