

Your application checklist

Below is the information we need from you as part of your submission. Please ensure you've addressed all these areas in your School Eco-Garden funding bid submission document as comprehensively as possible:

1. About your school

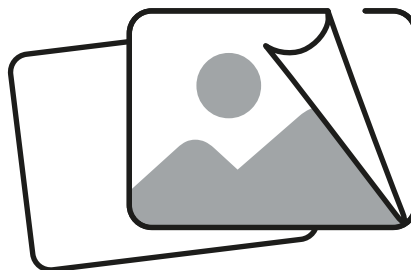
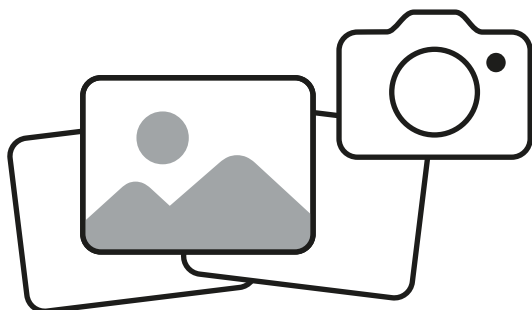
- ☐ Your school name and address.
- ☐ A brief introduction and description of your school's Eco-Garden design concept.
- ☐ Describe and show what the school environment is like now, and how the proposed Eco-Garden could improve it in the future. In other words what difference would the Eco-Garden make to the school in terms of environmental improvements, biodiversity and wildlife?
- ☐ As part of this process the school should undertake a biodiversity audit to provide a baseline. See [Derbyshire Wildlife Trust's School Grounds Habitat Audit](#) to assist you to do this. Schools that win funding will be asked to undertake further biodiversity audits after creating their Eco-Garden at 6 and 12 months to see what impact their garden has had. Schools may choose to undertake these on an ongoing basis as part of their curriculum.

2. About Your Eco-Garden Design – Making best use of your space

- ☐ Identify a space within the school that you would like to use to create your Eco-Garden.
- ☐ Describe how you will use the space, what will you do to that space, and what benefits this will bring.
- ☐ Provide a more detailed description of the final Eco-Garden design and the reasons why each element was incorporated.
- ☐ Please ensure you provide as much detail and evidence about the benefits that your Eco-Garden will bring to the environment, biodiversity, climate change, education, community engagement and wellbeing. These will be an important part of our bid assessment criteria.

3. Creative and Innovative Design

- ☐ Create and provide a visualisation of the Eco-Garden design. You could include plans, sketches, and photographs.





4. About your inspiration and the process – Student Impact

- ☐ Describe how you have reached your final design concept. What is the inspiration behind the design? How have the school children contributed to the idea and the final design? What have the children learnt along the way and how did these learnings shape the final outcome? Describe how the school children have worked on and contributed to creating the design.
- ☐ Provide information from the children themselves about what educational benefit there has been to the school children as part of the process of working on and creating their Eco-Garden design.

5. Leaving a legacy

- ☐ Describe any ongoing educational benefits that students of the school will gain should the garden be built.
- ☐ Include information about how the garden will be used on a day-to-day basis and embedded across the curriculum into children's ongoing learning.
- ☐ Describe any wider benefit that could be gained by your school community should the garden be built. Your school community could include pupils and staff as well as their family members, local groups and clubs, and could also include those that live or work around or near your school.

6. Breakdown of costs and time scales for delivery

- ☐ Include information that shows how the Eco-Garden design could realistically be created within the school grounds, along with an indicative breakdown of the costs associated with creating the Eco-Garden and any other funding that the school may be contributing from other sources (Note: It is not a requirement for schools to secure additional funding sources).
- ☐ Include information about how the school will develop and maintain the Eco-Garden should they receive the money to create their garden. Consideration to be given to the timings of planting etc.

Some rules

- Please visit www.eastmidlandsairport.com/eco-garden for more details about application deadline dates. Applications will only be considered if they are submitted by the deadline date.
- To enter the competition you must submit your application via our website on www.eastmidlandsairport.com/eco-garden using the form provided.
- You can contact us on community@eastmidlandsairport.com if you have any questions about the competition.
- Please read and agree to our terms and conditions located on our website.
- Please ensure that any images of individuals, including children, that are used in your submission meet your schools' safeguarding policies and that you have the relevant permission of all individuals for their images to be shared. These images and videos may be used on our website, in the press and in social media.