

# NTKWG

## Thursday 24<sup>th</sup> July 2025

### Flight Performance Report

## Departing Aircraft

### Track Keeping Performance by Departure Route (%)

	22BZD	22CLN	22DET	deps	04BZD	04CLN	04DET	deps
<b>April</b>	100.00	100.00	100.00	<b>2966</b>	100.00	99.70	95.96	<b>5499</b>
<b>May</b>	99.85	99.77	100.00	<b>3110</b>	100.00	99.53	97.73	<b>6137</b>
<b>June</b>	99.71	99.78	100.00	<b>8079</b>	100.00	98.99	100.00	<b>1090</b>

### Total Track Keeping Performance Total (%)

<b>April</b>	99.85
<b>May</b>	99.74
<b>June</b>	99.79

### PBN Reporting for CLN2E

	All 22CLN Movements	% Track Keeping against +/- 500m swathe	No of PBN Departures	% PBN Track Keeping against +/- 500m swathe
<b>April</b>	1620	98.77	1568	99.68
<b>May</b>	1739	98.50	1683	99.76
<b>June</b>	4540	98.33	4359	99.56

### Track Keeping Worst Performing

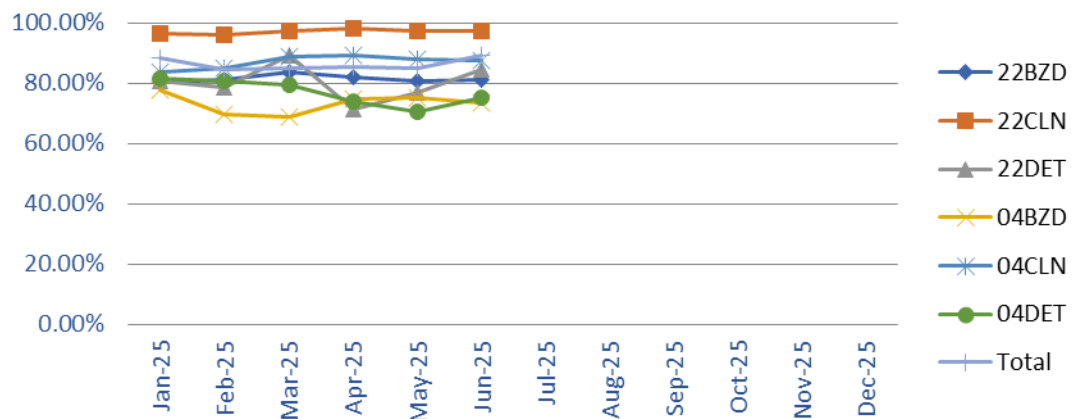
	Departures	%	Aircraft Type(s)
Asiana	25	88.00	Boeing 747-400
Hong Kong Air Cargo	37	97.30	Airbus A330
China Cargo	39	97.44	Boeing 777F
Pegasus	641	99.06	Airbus A321Neo

	Infringements Noise		1000ft
	Day	Night	24hr
April	0	0	0
May	0	0	0
June	2	0	2

- 2 x C17's – UAE Air Force

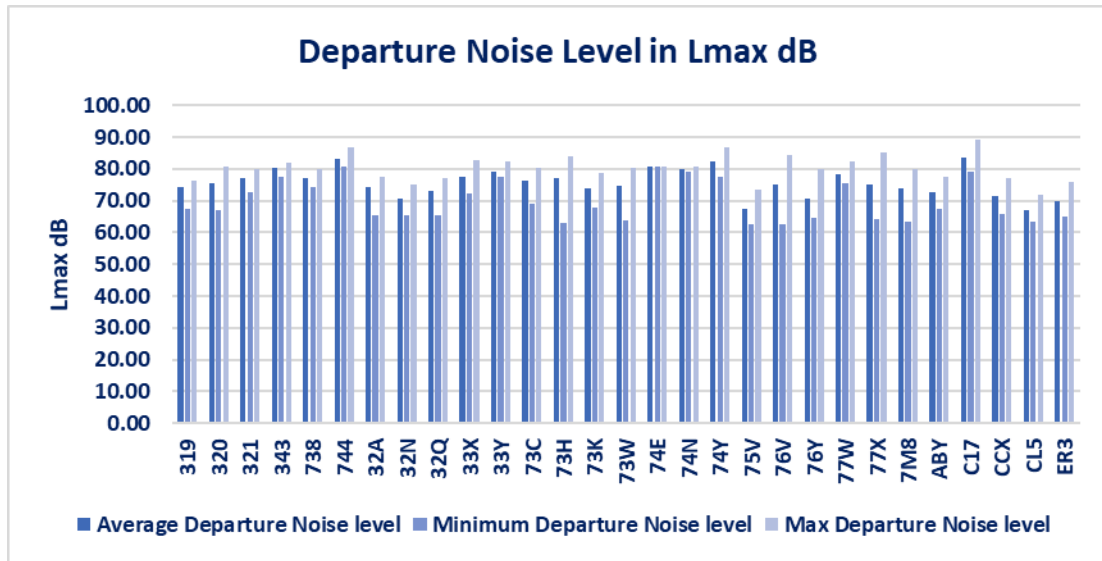
### Continuous Climb Performance by Route

## Continuous Climb Operations by Route 2025



	22BZD	22CLN	22DET	04BZD	04CLN	04DET	Total
Jan-25	80.36%	96.39%	80.70%	77.75%	83.74%	81.48%	88.44%
Feb-25	81.01%	96.25%	78.67%	69.74%	84.92%	80.88%	84.61%
Mar-25	83.50%	97.33%	89.33%	68.70%	88.99%	79.31%	85.14%
Apr-25	82.15%	98.02%	71.15%	74.62%	89.41%	73.74%	85.45%
May-25	80.84%	97.53%	76.79%	75.30%	87.80%	70.45%	84.86%
Jun-25	81.01%	97.38%	84.35%	73.62%	87.67%	75.00%	89.20%
Jul-25							
Aug-25							
Sep-25							
Oct-25							
Nov-25							
Dec-25							
Yr to date	81.31%	97.08%	81.31%	72.97%	87.79%	76.07%	86.29%

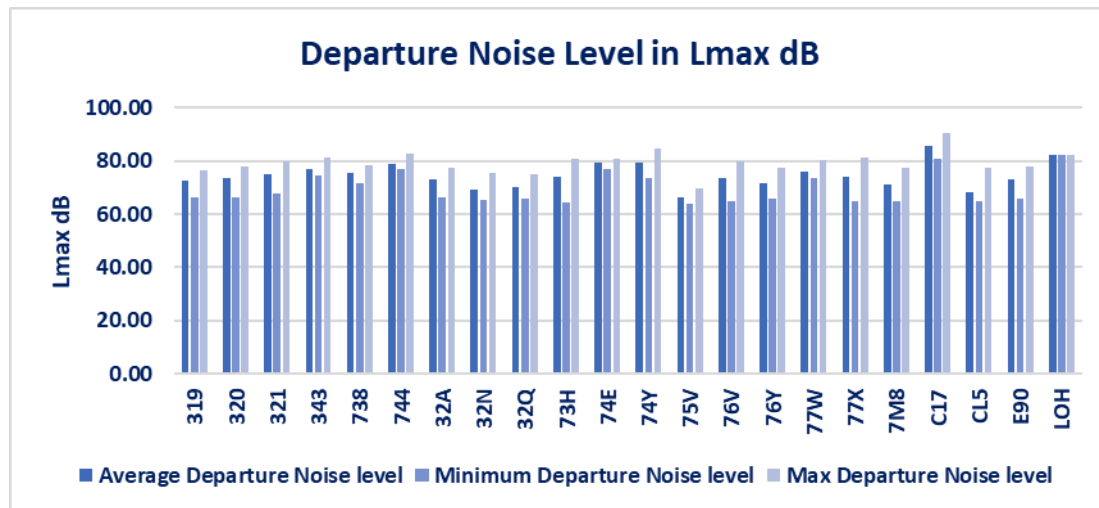
## Departure Levels recorded at Monitor 10 (Runway 04)



Aircraft Type	No of Departures	Average Departure Noise level	Minimum Departure Noise level	Max Departure Noise level
319	130	74.15	67.50	76.40
320	333	75.63	67.20	80.80
321	129	76.93	72.80	79.90
343	3	80.23	77.40	82.00
738	65	77.21	74.40	80.10
744	5	83.30	80.90	86.80
32A	95	74.48	65.30	77.40
32N	246	70.78	65.60	74.90
32Q	187	72.97	65.40	77.30
33X	38	77.60	72.10	82.90
33Y	34	79.30	77.50	82.50
73C	3	76.17	69.10	80.20
73H	7965	77.03	63.00	84.10
73K	35	73.95	67.80	78.90
73W	26	74.75	63.90	80.30
74E	1	80.70	80.70	80.70
74N	4	79.88	79.30	80.90
74Y	34	82.24	77.50	86.90
75V	73	67.52	62.50	73.50
76V	59	75.23	62.40	84.30
76Y	70	70.85	64.50	80.00
77W	86	78.45	75.70	82.50
77X	202	75.15	64.10	85.00
7M8	2141	73.69	63.60	80.10
ABY	49	72.49	67.50	77.60
C17	4	83.63	79.30	89.30

CCX	34	71.54	65.90	77.20
CL5	58	66.88	63.40	71.90
ER3	28	69.99	64.90	75.90
<b>Grand Total</b>	<b>12455</b>	<b>75.82</b>	<b>62.40</b>	<b>89.30</b>

### Departure Levels recorded at Monitor 5 (Runway 22)



Aircraft Type	No of Departures	Average Departure Noise level	Minimum Departure Noise level	Max Departure Noise level
319	172	72.65	66.20	76.50
320	350	73.29	66.40	78.10
321	167	74.78	67.50	80.00
343	3	77.10	74.40	81.30
738	85	75.63	71.50	78.20
744	14	78.96	76.80	82.70
32A	135	73.10	66.40	77.30
32N	218	69.01	65.30	75.70
32Q	217	70.31	65.90	74.90
73H	8858	74.24	64.50	80.90
74E	3	79.20	76.80	80.70
74Y	40	79.11	73.30	84.80
75V	59	66.51	64.00	69.50
76V	60	73.71	64.90	79.60
76Y	71	71.52	65.70	77.20
77W	98	76.03	73.50	80.50
77X	189	73.90	64.60	81.40
7M8	2283	71.25	65.00	77.20

C17	4	85.73	80.70	90.30
CL5	43	68.40	65.00	77.40
E90	46	72.88	65.70	77.90
LOH	1	82.20	82.20	82.20
<b>Grand Total</b>	<b>13566</b>	<b>73.43</b>	<b>64.00</b>	<b>90.30</b>

## Arriving Aircraft

### CDA Runway 22 Performance by Time Period (%)

	24 Hr	Day (07:00 – 23:00)	Night (23:00-07:00)	Core Night (23:30-06:00)
<b>April</b>	96.61	96.19	98.95	98.71
<b>May</b>	95.34	95.14	96.21	96.34
<b>June</b>	96.21	95.80	98.00	98.31

<b>CDA Runway 04</b>	<b>Movements</b>	<b>% Core Night (23:30-06:00)</b>
<b>April</b>	561	77.01
<b>May</b>	737	79.51
<b>June</b>	205	79.51

### CDA (Runway 22) – Worst Performing

	Arrivals	%	Aircraft Type(s)
China Cargo	18	55.56	Boeing 777F
China Southern	41	68.29	Boeing 777F
BA City Flyer	38	78.95	Embraer 190
Pegasus	343	82.22	Airbus A321 neo

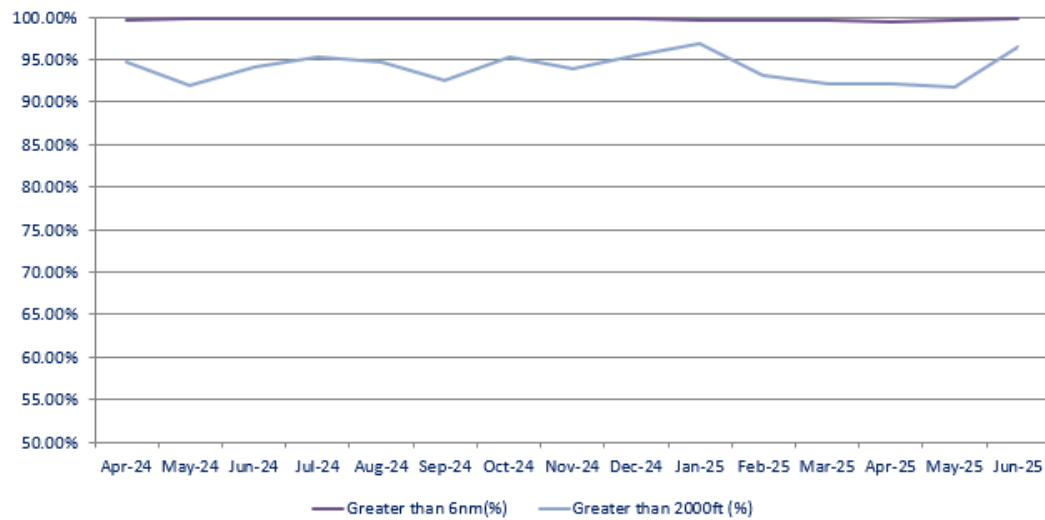
### Missed Approaches

<b>April</b>	21
<b>May</b>	19
<b>June</b>	19

## Instrument Landing System (ILS) Joining Point

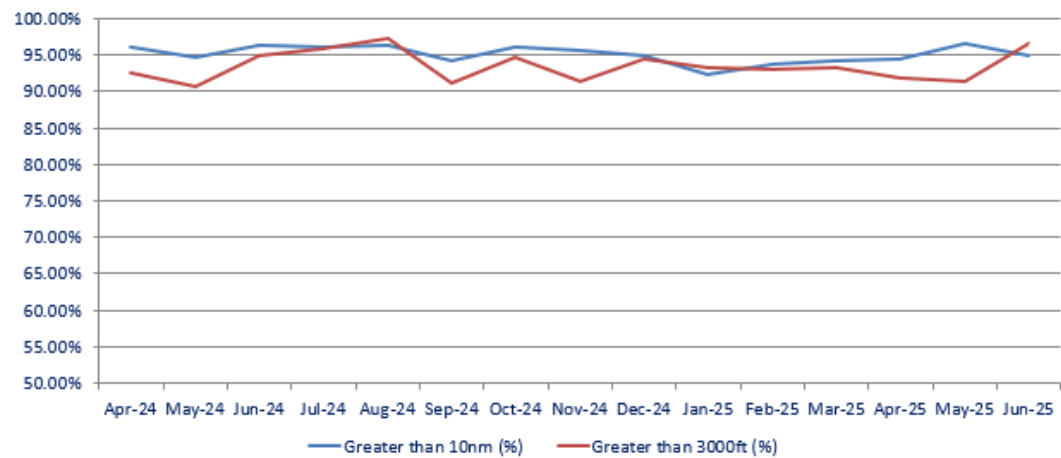
(Daytime arriving aircraft intercepting the ILS beyond 6nm and above 2,000ft)

ILS Joining Point - Daytime



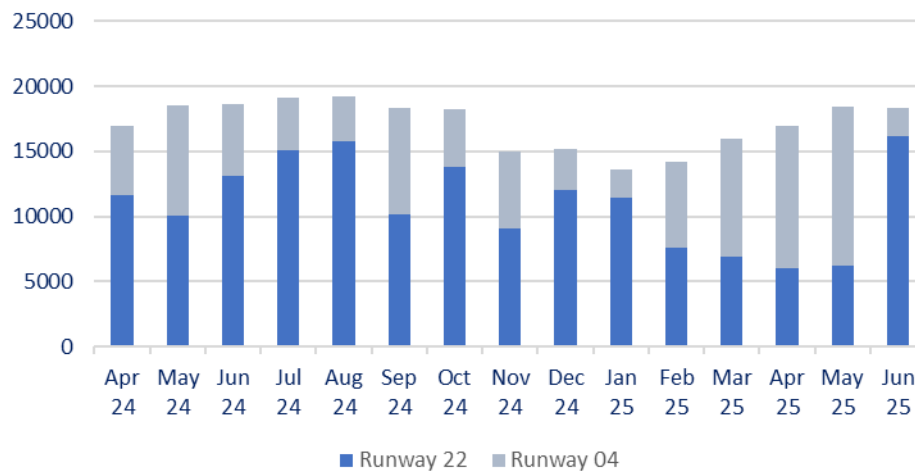
(Night-time arriving aircraft intercepting the ILS beyond 10nm and above 3,000ft)

ILS Joining Point - Night time



# General Information

## Runway Movements per Month



## Overflight of AIP no Fly Zones

	Bishops Stortford	Stansted Mountfitchet	Sawbridgeworth	St Elizabeth's
<b>April</b>	7	0	0	9
<b>May</b>	16	0	0	7
<b>June</b>	4	0	0	14

\* Note, the monitoring of Bishops Stortford is set at 6,000ft QNH, although not specified in the UKAIP. St Elizabeth's is set at 4,000ft QNH and Stansted Mountfitchet and Sawbridgeworth set at 2,500ft QNH.

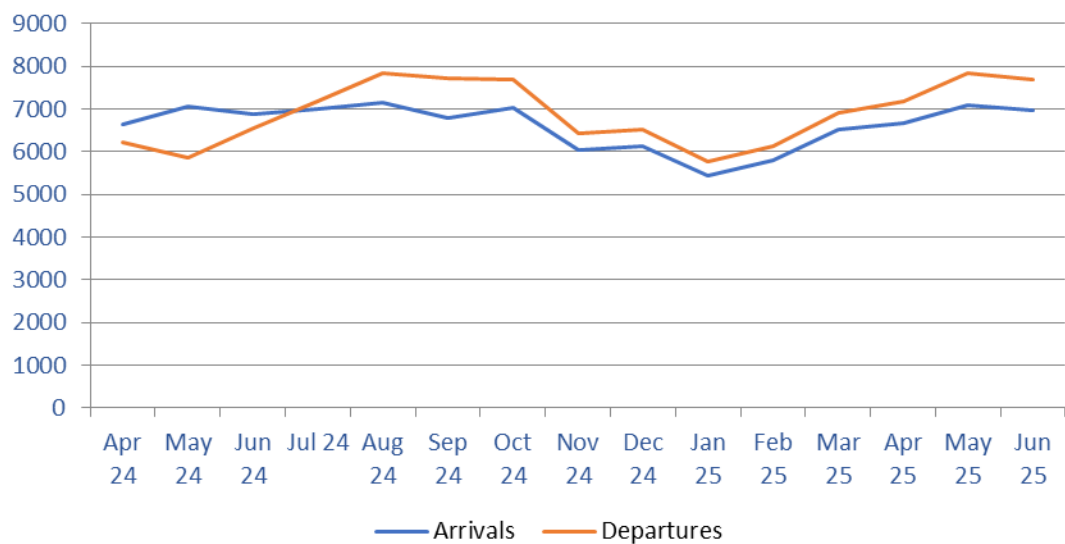
## Overflight of AIP no Fly Zones by route

	Bishops Stortford	Stansted Mountfitchet	Sawbridgeworth	St Elizabeth's
<b>22 Arrivals</b>	4	0	0	1
<b>22 Departures</b>	1	0	0	29
<b>04 Arrivals</b>	22	0	0	0
<b>04 Departures</b>	0	0	0	0

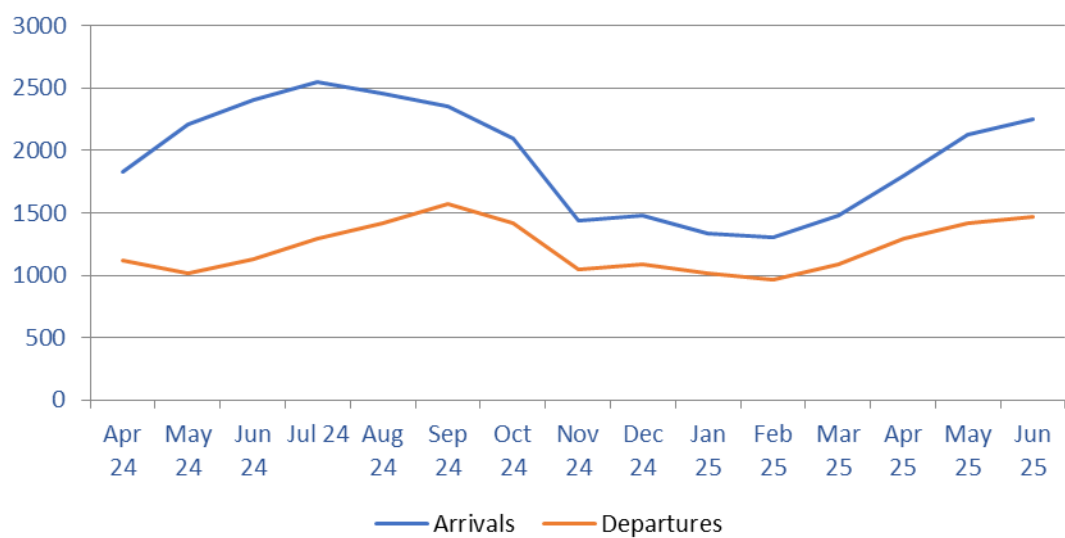
During this 3-month period, overflights of the AIP zones totalled 57. During April, the overflights of St Elizabeth's were all runway 22 departures. The 7 overflights of Bishops Stortford were 6 x vectored runway 04 arrivals and 1 other runway 22 arrival undertaking a go-around. May saw a similar pattern, but more vectored runway 04 arrivals, proportional to the increased easterly operations. There was also 1 x runway 22 departure over Bishop's Stortford, which was due to weather avoidance. June operations being mainly westerly, reduced the overflights of Bishop's Stortford, but did include 1 runway 22 arriving aircraft undertaking a go-around.

Day and Night Operations Trend Data

16hr Daytime Movements per Month



8hr Night Movements per Month

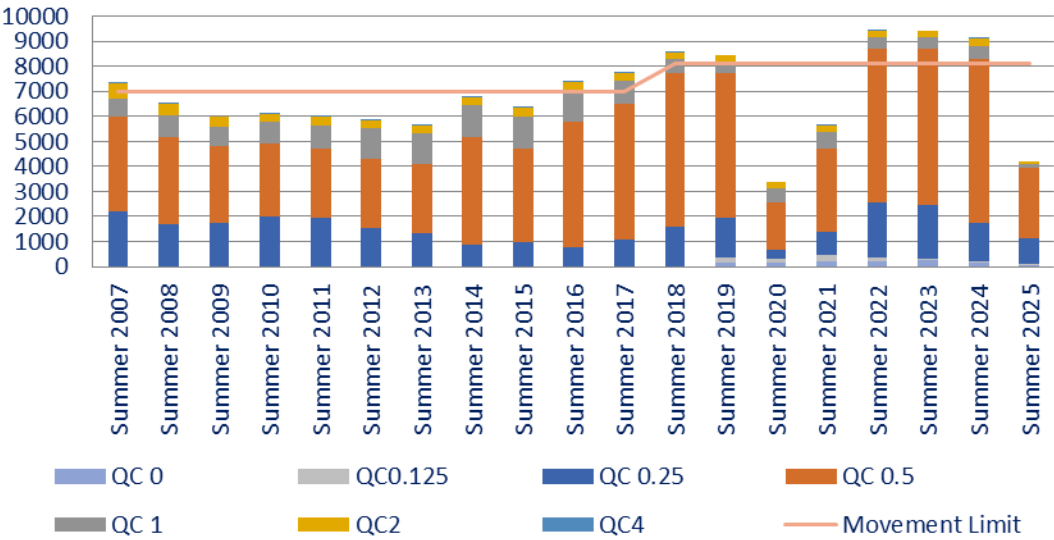


Night Operations

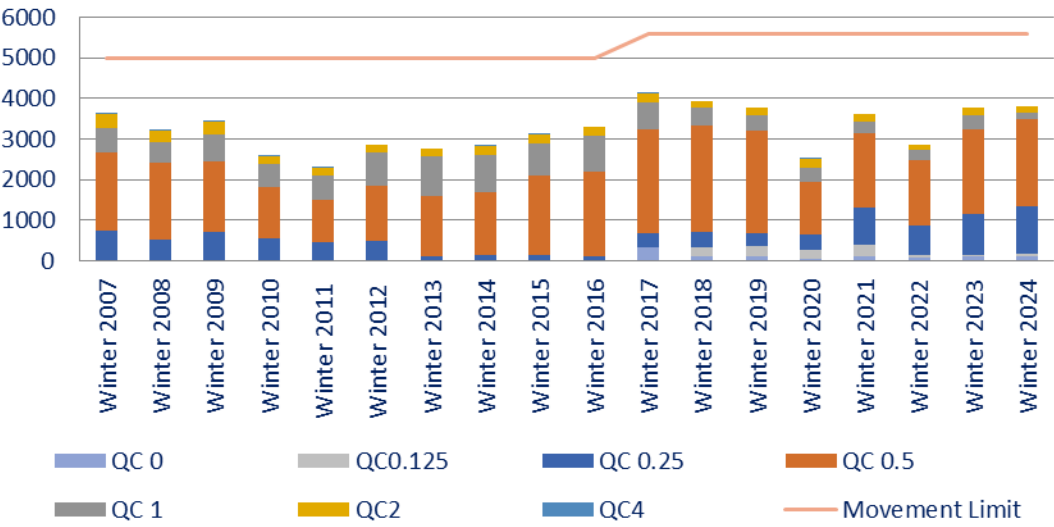


Night Movements by Season

Summer Night Operations by QC Band

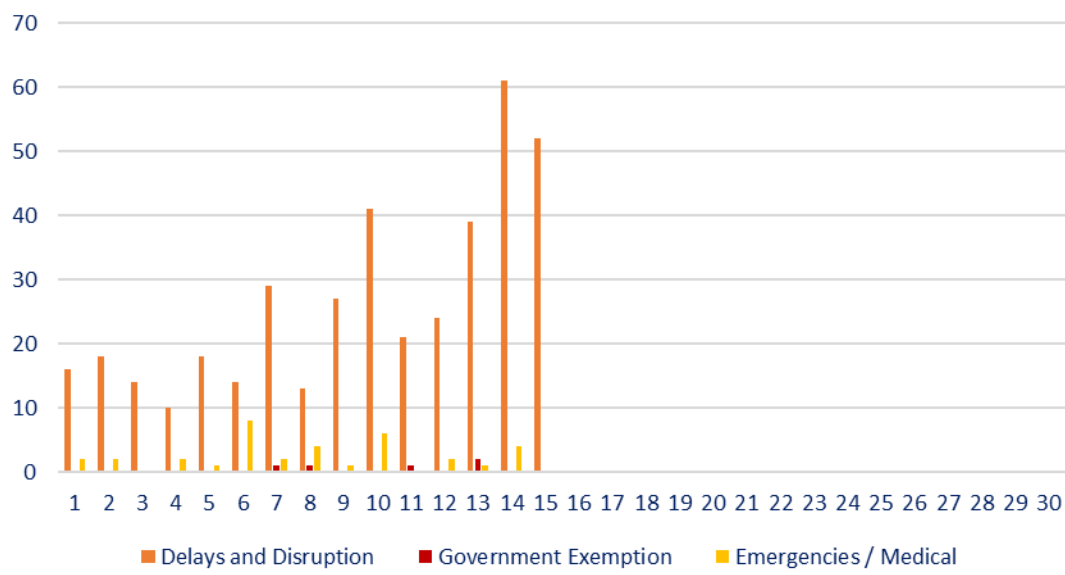


Winter Night Operations by QC Band

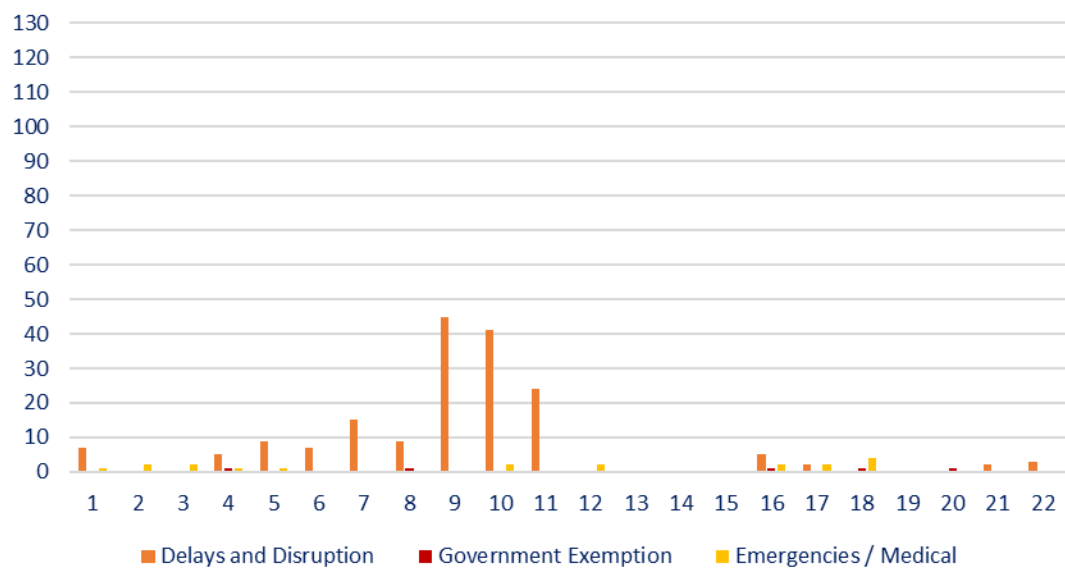


Night Movements Dispensations by Week

Summer 2025 Night Operations by Exemption Type



Winter 2024 Night Operations by Exemption Type



# Complaints Response Times

Complaints Response Times

