

# EMA Community Fund Annual Report



1<sup>ST</sup> APRIL 2022 TO 31<sup>ST</sup> MARCH 2023



## WHAT IS THE COMMUNITY FUND?

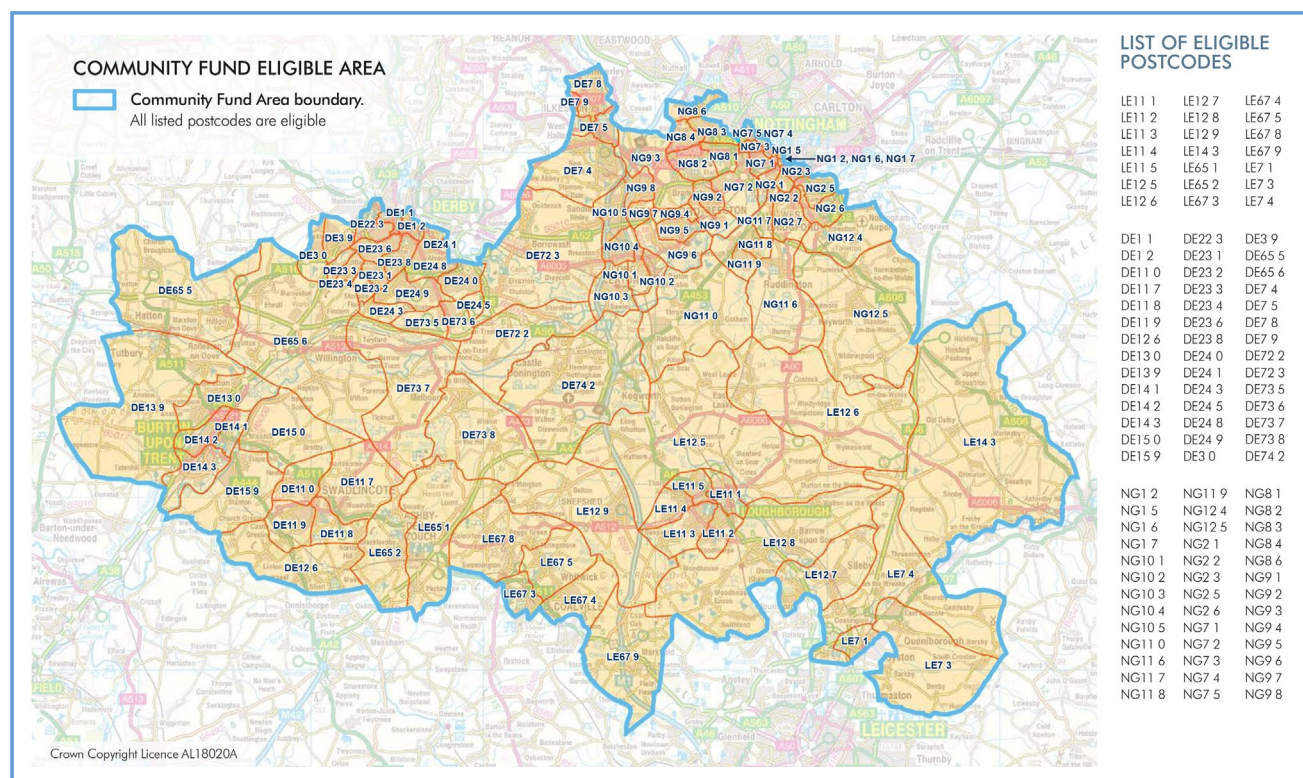
The EMA Community Fund was established in April 2002 and by 31<sup>st</sup> March 2023 it has donated £1,972,574 to 1,685 projects, to bring lasting benefit to the communities around the airport.

The Community Fund awards grants to support eligible projects that have a lasting community, social, educational or environmental benefit and can award a maximum of **£2,000** per application looking for tangible items of lasting value.

More information about our EMA Community Fund is available on our website [here](#) which includes deadline dates for applications, links to our [Application Form](#) and the [Community Fund brochure](#) that provides more details about eligibility criteria. It is advisable to read the Community Fund Brochure before completing an application.



The Community Fund is open all year round to community groups within a defined 'area of benefit' which you can see below as well as in our Community Fund Brochure. It is easy to see where your group is within this area by looking at the list of eligible postcodes to the right of the image.



# WHERE DOES THE MONEY COME FROM?

The Fund is currently supported by an annual donation of **£50,000** from the airport and through the donation of noise surcharges and noisy aircraft penalties imposed when aircraft exceed our noise limits.

In the financial year from April 2022 to March 2023 there were **£772,600** of QC4 surcharges and a total of **£13,290** noise fines levied.

## QC4 SURCHARGES AND THE EAST MIDLANDS AIRPORT COMMUNITY FUND

In 2021 we introduced a surcharge levied against airlines who operate night flights with aircraft such as the Boeing 747-400 which fall into the noise quota count category 'QC4'. This surcharge is intended to disincentivise the use of noisier aircraft at night. During the COVID-19 pandemic airlines needed to use older, larger aircraft, including Boeing 747-400s which are QC4 rated on departure. In the two years since it's introduction, between 1st April 2021 and 31st March 2023, the QC4 surcharge generated **£1,217,600** for the East Midlands Airport Community Fund.

To maximise the impact of additional funds generated from QC4 surcharges, the East Midlands Airport Community Fund Committee agreed two new special funding projects:

**A local 'Schools' Eco-Garden competition', with funding to turn winning designs into a reality.**

This project supports local schools and aligns with the 'Opportunity for all' strategic priority identified in our Corporate Social Responsibility (CSR) Strategy 'Working Together for a Brighter Future'.

**A 'Low Carbon Energy Fund' for local community and public buildings such as schools and village halls, to pay for solar panels or similar low carbon energy projects.**

This project aligns with the 'Zero Carbon Airports' strategic priority of our CSR Strategy.





# ECO-GARDEN COMPETITION & FUND

East Midlands Airport ran a Schools' Eco-Garden competition in 2022 and invited local schools within the Community Fund's 'area of benefit' to take part. Judges were looking for designs that were environmentally friendly and provide lasting benefit to school communities. 26 schools benefited from the competition and won a total of **£300,515** in funding.

Following the successful Eco-Garden Competition, the Community Fund committee ring-fenced funding to continue to offer a School Eco-Garden Fund. Schools can bid for up to **£10,000** to turn their Eco-Garden dream into a reality.

Details about the fund and how to apply, including our handy [Eco-Garden Grant summary guide](#) and [Terms and Conditions](#) are on our website [here](#).

In FY22/23 the East Midlands Airport School Eco-Garden Fund provided a total of **£309,667** in grant funding, which supported 26 schools through the Eco-Garden competition and one school through the new Eco-Garden fund, to turn their garden designs into a reality.



Ashby Willesley received **£5,010** towards their Eco-Garden project



Diseworth Primary School received **£18,000** towards their Eco-Garden project



English Martyrs received **£18,700** towards their Eco-Garden project



Findern School received **£3,220** towards their Eco-Garden project



Dovecote Primary School received **£8,000** towards their Eco-Garden project



# LOW CARBON ENERGY FUND



Low Carbon Energy Fund - Draycott and Long Eaton Table Tennis Club received £10,000 towards LED lighting

**East Midlands Airport's Community Fund launched a Low Carbon Energy Fund to help to support our most local communities to make the transition to more sustainable energy sources.**

This fund will contribute towards solar panels, LED installations, electric charging points, air and ground source heating and similar proven technologies for low carbon energy for local community and public buildings such as schools and village halls.

The first round of funding was made available in 2021/22 as a pilot project which saw three local hospices receive a total of **£59,774** from our Low Carbon Energy Fund. Rainbows Children's Hospice in Loughborough, Treetops Hospice in Derbyshire and Loros in Leicestershire were each awarded grants of around **£20,000** each.

In 2022/23 an additional **£200,000** of funding was ringfenced for the 'Low Carbon Energy Fund and a total of **£164,563** was awarded to support 19 low carbon energy community projects.

Local community groups, parish councils, schools and not-for-profit community organisations can apply for up to **£10,000** towards LED installations, electric charging points, air and ground source heating and similar proven technologies for low carbon energy.

More information can be found on our website [here](#) as well in our '[Low Carbon Energy Fund Guidance document](#)'. There is a maximum cap of **£10,000** per bid and organisations that are successful in securing a grant will have 12 months to complete their project.



Low Carbon Energy Fund - Wollaton Village Tennis Club received **£6,200** towards LED floodlights

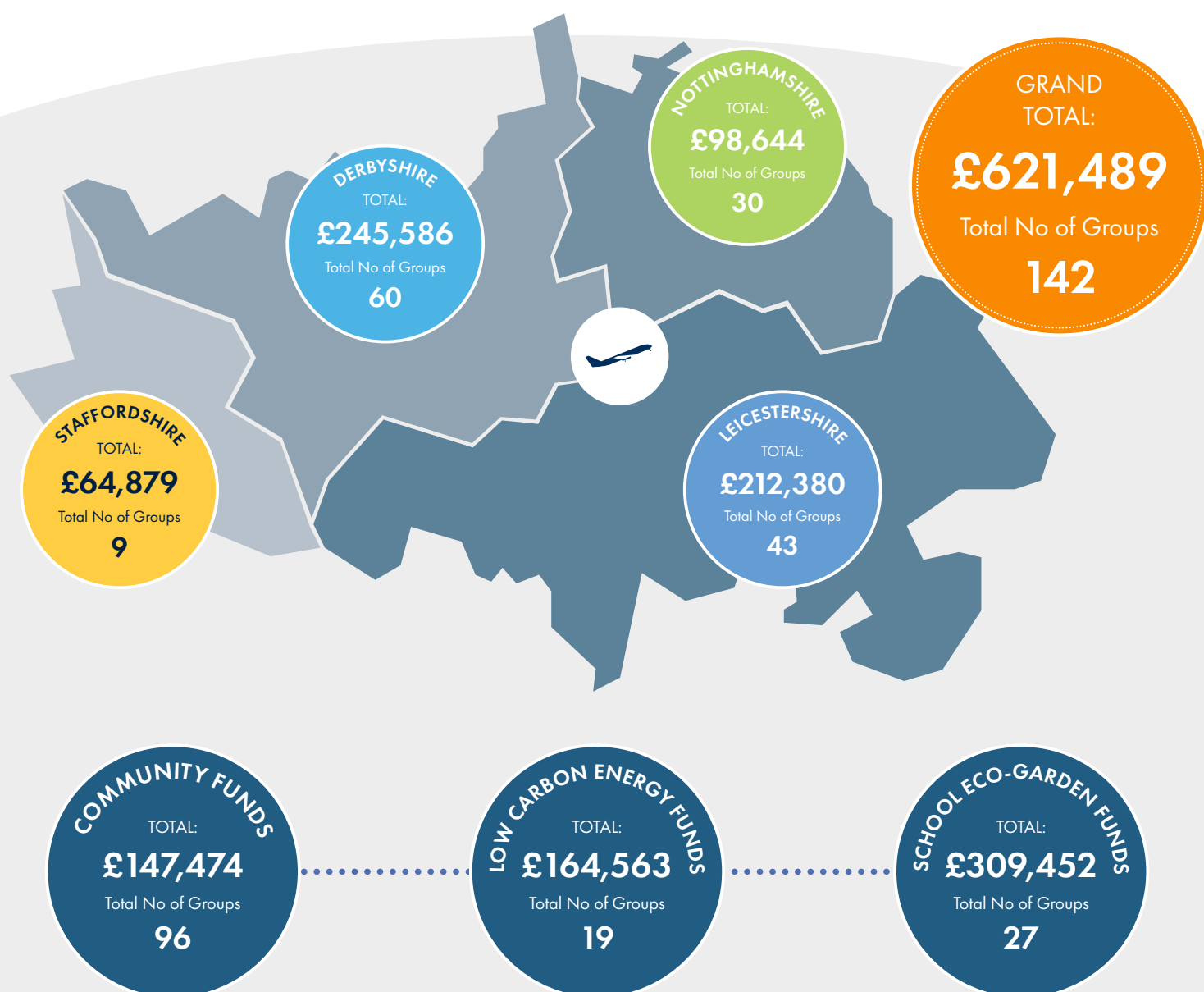


Low Carbon Energy Fund - St John Ambulance received **£10,000** towards an electric car



# HOW HAS THE MONEY BEEN DISTRIBUTED?

Below is a summary of the grants made in 2022/2023 by County, followed by a full list of grants for each County.





# HOW HAS THE MONEY BEEN SPENT?

The committee met in April, July, September, November 2022 and January, March 2023 to consider applications made.

In 2022/23, the East Midlands Airport Community Fund awarded a total of **£625,704** to 143 community projects. This includes:

**£147,474**

in normal Community Fund grants to 96 local community projects

**£309,667**

in Schools' Eco-Garden Competition and grant awards to 27 schools

**£164,563**

in Low Carbon Energy Fund grants to support 19 community projects

## WHO HAS BENEFITTED FROM A GRANT FROM THE EMA COMMUNITY FUND?

A full list of beneficiaries is provided within this report, along with some examples of projects that have benefitted.



Treetops Hospice received **£2,000** towards a disabled access automatic door for their new Contemplation Courtyard



Burton Concert Band received **£2,000** towards an Eeb Bass Tuba

## Examples of projects that have benefitted:



Chellaston Players received **£1,950** towards mobile LED theatre lighting



Elvaston Community Group **£265** towards equipment for children's workshops



Erewash Indoor Bowls Club



The Helpful Bureau received **£1,266** for essential equipment for their volunteer drivers and clients



Stanton by Dale Cricket Club received **£1,500** towards a pitch mower



RK Judo Club received **£2,000** towards crashmats



Newton Solney Parish Council received **£1,455** towards a heritage board



1st Repton Scouts received **£1,740** towards fire shelters



Shardlow Inland Port Festival received **£1,000** towards table and chairs and card readers



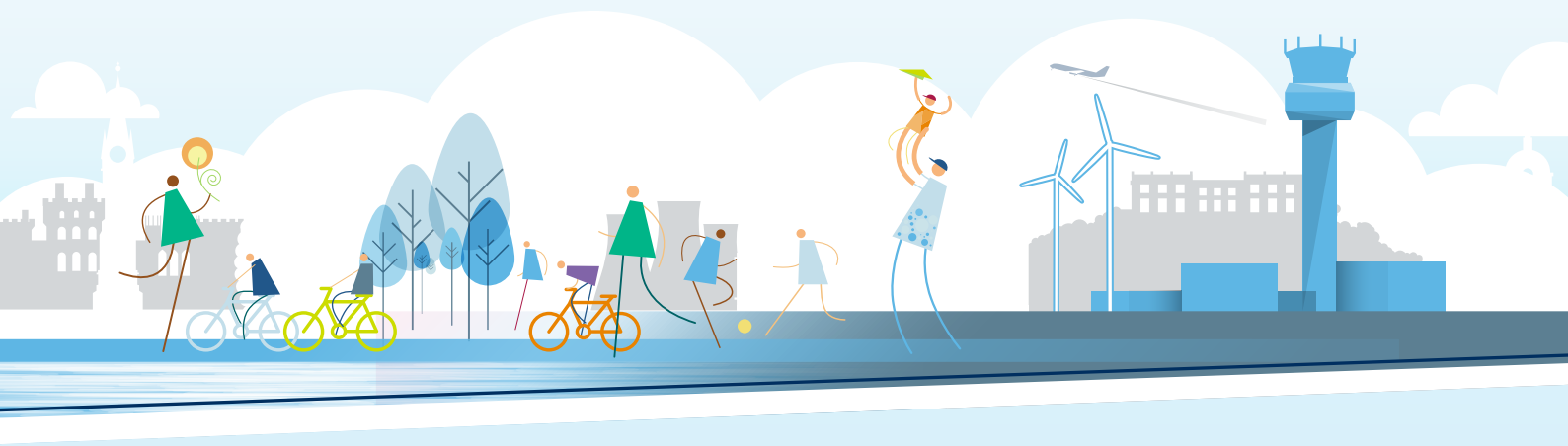


## DERBYSHIRE

### AIRPORT COMMUNITY FUND - TOTAL: £66,912 GROUPS: 44

|                                       |        |
|---------------------------------------|--------|
| Chellaston Players                    | £1,950 |
| Crow Wood CIC - Mayvale Grove Orchard | £2,000 |
| Trent Valley Sailing Club Long Eaton  | £2,000 |
| Erewash Indoor Bowls Club             | £2,000 |
| Treetops Hospice                      | £2,000 |
| Long Eaton Scout Activity Centre      | £2,000 |
| Newton Solney Parish Council          | £1,455 |
| 1st Sawley Scouts                     | £1,960 |
| Stanton by Dale Cricket Club          | £1,500 |
| Beeston Unity Lawn Bowls Club         | £660   |
| Elephant Rooms                        | £1,480 |
| Barrow upon Trent Parish Council      | £500   |
| Draycott Village Fund                 | £2,000 |
| Sinfonia Viva                         | £1,960 |
| Arts Melbourne CIC                    | £2,000 |
| Alternatives Activity Centre          | £290   |
| Elvaston Community Group              | £265   |
| Moirs Replan                          | £2,000 |
| Shardlow Inland Port Festival         | £1,000 |
| Belmont Bowls Club                    | £2,000 |
| Littleover Tennis Club                | £1,100 |
| 1st Woodville St Stephens Scout Group | £2,000 |

|   |        |
|---|--------|
| Derby Music Hub                         | £1,879 |
| Ockbrook and Borrowash Lawn Tennis Club | £800   |
| Swadlincote Lasers Basketball           | £500   |
| People Potential Possibilities          | £1,460 |
| Etwall Bowls Club                       | £2,000 |
| Rykneld Bowling Club                    | £1,100 |
| 1st Repton Scouts                       | £1,740 |
| Rosehill Methodist Sports Club          | £2,000 |
| Willington Crown Green Bowling Club     | £1,560 |
| NODS theatre company                    | £1,190 |
| 1st Breaston Scouts                     | £2,000 |
| RK Judo                                 | £2,000 |
| Sawley Youth Club                       | £695   |
| UC Dance                                | £2,000 |
| Newton Solney in Bloom                  | £713   |
| Derbyshire Wildlife Trust               | £769   |
| Scropton Riding for the Disabled        | £1,990 |
| Sawley Before and After School Club     | £1,382 |
| 107th Derby Scouts                      | £1,660 |
| Canaan Trust                            | £1,922 |
| Elvaston Cricket Club                   | £1,525 |
| Youth Landscapers CIC                   | £1,907 |





## DERBYSHIRE

### LOW CARBON ENERGY FUND - TOTAL: £67,519 GROUPS: 7

|   |         |
|---|---------|
| Lockington cum Hemington Parish Council   | £10,000 |
| Draycott and Long Eaton Table Tennis Club | £10,000 |
| Draycott and Wilne Parish Council         | £9,869  |
| Breaston Parish Council                   | £10,000 |
| St John's Ambulance, Derby                | £10,000 |
| Farmer's Row, Castle Donington            | £10,000 |
| Shardlow Primary School                   | £7,650  |

### SCHOOL ECO-GARDEN FUND - TOTAL: £111,155 GROUPS: 9

|   |         |
|---|---------|
| St George's Catholic Voluntary Academy, Littleover      | £17,500 |
| St John Fisher Catholic Voluntary Academy, Alvaston     | £9,285  |
| St Josephs Catholic Primary School, Derby               | £18,000 |
| English Martyrs' Catholic Voluntary Academy, Long Eaton | £18,700 |
| St Thomas Catholic Voluntary Academy, Ilkeston          | £9,880  |
| Aston on Trent Primary School, South Derbyshire         | £18,570 |
| Findern Primary School, South Derbyshire                | £3,220  |
| Longdon Park School in Egginton, South Derbyshire       | £6,000  |
| St Edward's Catholic Academy in Newhall, Swadlincote    | £10,000 |

## LEICESTERSHIRE

### AIRPORT COMMUNITY FUND - TOTAL: £40,639 GROUPS: 26

|  |        |
|--|--------|
| Barkby United Cricket Club                             | £2,000 |
| Whitwick Athletic Football Club                        | £225   |
| Charles Booth Community Centre                         | £2,000 |
| Coalville Education Partnership CIC (Holly Hayes)      | £1,490 |
| Quorn Village CIC                                      | £2,000 |
| Kegworth Tennis Club                                   | £480   |
| Wymeswold Bowling Club                                 | £1,500 |
| Choices Allotments                                     | £1,544 |
| Broomley Football Club                                 | £474   |
| Coalville Town Hockey Club                             | £1,200 |
| Normanton on Soar Community Shop                       | £1,000 |
| Starlight Youth Theatre                                | £1,538 |
| Kegworth Village Hall                                  | £2,000 |
| Crawshaw District GirlGuiding                          | £1,860 |
| Long Whatton Community Association                     | £2,000 |
| Loughborough Lawn Tennis Club                          | £2,000 |
| FODS - Friends of Diseworth School                     | £2,000 |
| Loughborough Town Cricket Club                         | £1,700 |
| Shuttlewood Clark Foundation                           | £958   |
| Breedon Church   | £989   |
| WINGS  | £2,000 |
| Leicester Children's Holidays                          | £2,000 |
| Old Dalby Village Hall                                 | £1,782 |
| Broughton Chest Project (Upper Broughton Village Hall) | £2,000 |
| Friends of Ab Kettleby School                          | £2,000 |
| Kegworth Player Youth Arts                             | £1,899 |



## LEICESTERSHIRE

### LOW CARBON ENERGY FUND - TOTAL: £60,844 GROUPS: 8

|                                    |         |
|------------------------------------|---------|
| Kegworth Parish Council            | £1,434  |
| Castle Donington Parish Council    | £7,802  |
| Castle Donington Museum            | £10,000 |
| Rempstone Village Hall             | £10,000 |
| Normanton on Soar Jubilee Field    | £10,000 |
| Ashby Castle Lawn Tennis Club      | £10,000 |
| Coalville Town Youth Football Club | £2,235  |
| Shepshed Cricket Club              | £9,373  |

### SCHOOL ECO-GARDEN FUND - TOTAL: £110,897 GROUPS: 9

|   |         |
|---|---------|
| Hathern C of E Primary School, Charnwood    | £16,750 |
| Humphrey Perkins, Barrow on Soar, Charnwood | £8,200  |
| Wymeswold C of E Primary School, Charnwood  | £5,000  |
| Ashby Willesley Primary School, NWLDC       | £5,010  |
| Castle Donington College, NWLDC             | £20,000 |
| Diseworth C of E Primary School, NWLDC      | £18,000 |
| Kegworth Primary School, NWLDC              | £9,000  |
| Long Whatton Primary School, NWLDC          | £20,000 |
| Wreake Valley Academy, Syston               | £8,937  |

## NOTTINGHAMSHIRE

**AIRPORT COMMUNITY FUND - TOTAL: £33,944 GROUPS: 22**

|  |        |
|--|--------|
| Costock CofE School PTA                            | £2,000 |
| Friends of Sharphill Wood                          | £250   |
| Notts County Foundation                            | £1,500 |
| 15th Nottingham Scout Group (Lenton Abbey)         | £1,700 |
| Harlequins Netball Club                            | £800   |
| Parochial Church Council of Keyworth Parish Church | £2,000 |
| Bipolar Lift CIC                                   | £750   |
| The Helpful Bureau                                 | £1,266 |
| Grangewood Methodist Church                        | £2,000 |
| Young Lions CC                                     | £2,000 |
| Skate Nottingham                                   | £1,750 |
| Gotham Village Cricket Club                        | £2,000 |
| Spirit Eagles CIC.                                 | £1,700 |
| Clifton Village Cricket Club                       | £1,000 |
| Dunkirk and Old Lenton Community Association       | £1,700 |
| Insight Community CIC                              | £1,648 |
| Attenborough Tennis Club                           | £2,000 |
| Nottingham Outlaws                                 | £1,653 |
| Broxtowe Community Project                         | £1,911 |
| St John's Community Orchard                        | £591   |
| Wollaton Walled Garden                             | £2,000 |
| Friends of the Hook                                | £1,725 |



## NOTTINGHAMSHIRE

### LOW CARBON ENERGY FUND - TOTAL: £36,200 GROUPS: 4

|                                      |         |
|--------------------------------------|---------|
| 15th Long Eaton Sea Scouts           | £10,000 |
| Wollaton Village Tennis Club         | £6,200  |
| Willoughby on the Wolds Village Hall | £10,000 |
| Barton in Fabis Village Hall         | £10,000 |

### SCHOOL ECO-GARDEN FUND - TOTAL: £28,500 GROUPS: 4

|   |         |
|---|---------|
| Alderman Pounder School, Chilwell, Broxtowe       | £1,800  |
| Dovecote Primary and Nursery, Clifton, Nottingham | £8,000  |
| The Glapton Academy, Clifton, Nottingham          | £4,700  |
| West Bridgford Junior School, Rushcliffe          | £14,000 |



## STAFFORDSHIRE

### AIRPORT COMMUNITY FUND - TOTAL: £5,979 GROUPS: 4

|                           |        |
|---------------------------|--------|
| Winshill Football Club    | £1,654 |
| Burton Concert Band       | £2,000 |
| St Marys Church, Stretton | £1,900 |
| Able Too                  | £425   |

### SCHOOL ECO-GARDEN FUND - TOTAL: £58,900 GROUPS: 5

|  |         |
|--|---------|
| Blessed Robert Sutton CAV, Burton on Trent           | £18,000 |
| Burton Fields School, Burton on Trent                | £8,400  |
| Holy Rosary CAV, Winshill, Burton upon Trent         | £6,500  |
| Holy Trinity Primary CofE School, Burton on Trent    | £6,000  |
| Outwoods Primary School, Horninglow, Burton on Trent | £20,000 |



More information about our EMA Community Fund is available on our website [here](#) which includes deadline dates for applications, links to [Community Fund brochure](#) with details about eligibility criteria as well as the [Application Form](#).

Or for further information please contact:  
✉ [community@eastmidlandsairport.com](mailto:community@eastmidlandsairport.com)

